

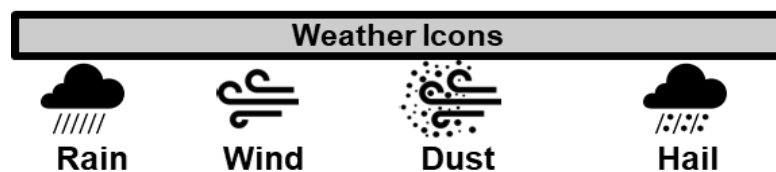
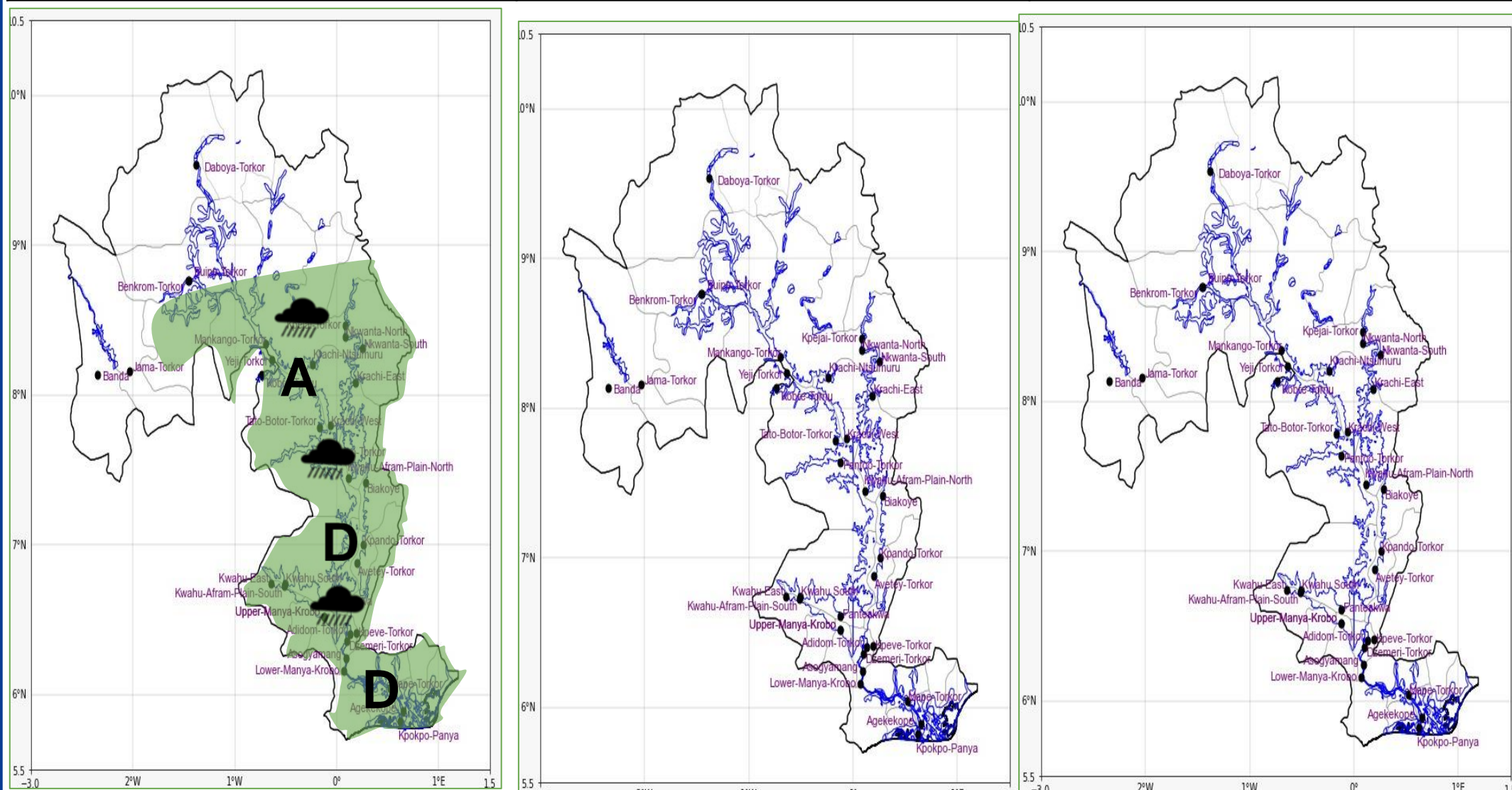


INLAND WATER IMPACT-BASED FORECAST

WEATHER SUMMARY

Mostly cloudy weather conditions are expected throughout the forecast period. Cases of isolated light to moderate rain are expected over the middle and southern portions of the lake and its environment this evening.

EVENING (09/12/2025)	MORNING (10/12/2025)	AFTERNOON (10/12/2025)
----------------------	----------------------	------------------------



Date
09/12/2025
Time Issued
4:00 PM
Valid From
06:00 PM
Nowcasting Risk
Take Action
Be aware
Low risk
No risk

Weather Forecast Risk Table				
Likelihood ↑	High (>60%)	G	H	I
	Medium (40%-60%)	D	E	F
	Low (<40%)	A	B	C
		Low	Medium	High
		Impact →		

Time	Surface Wind	Visibility	Temperature
12 hours	S/SE 05 Max 19 kt	(5 – 10) km	(24 – 34) °C
24 hours	S/SE 05 Max 19 kt	(4 – 10) km	(23 – 31) °C