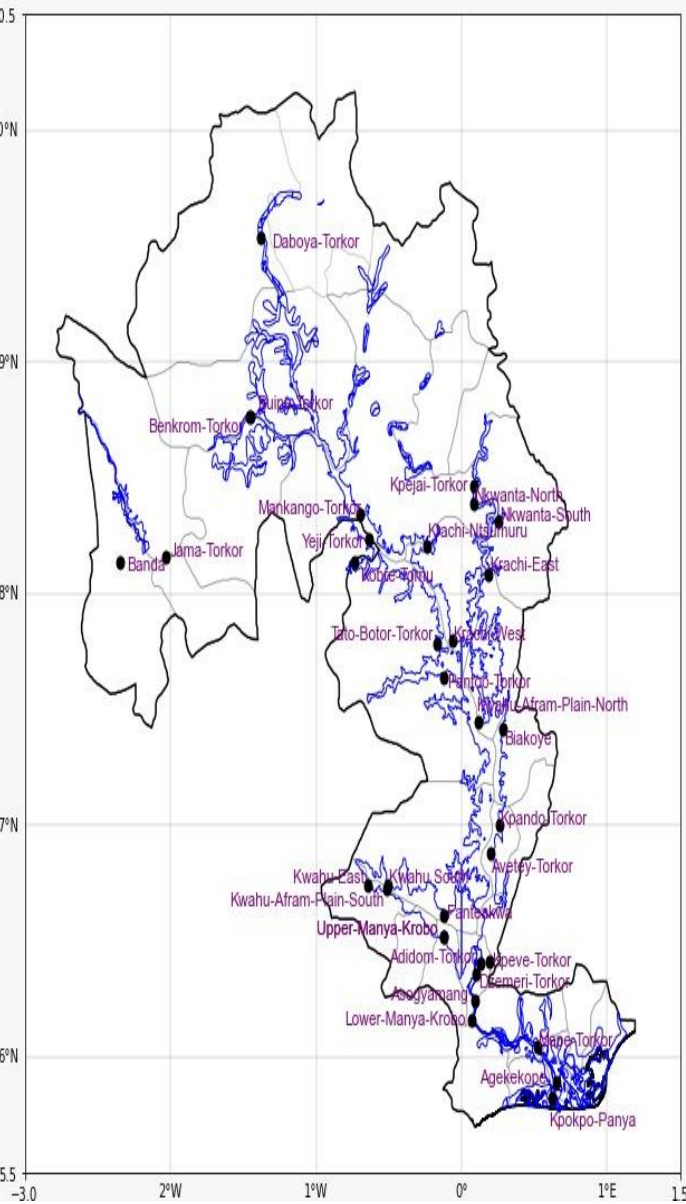
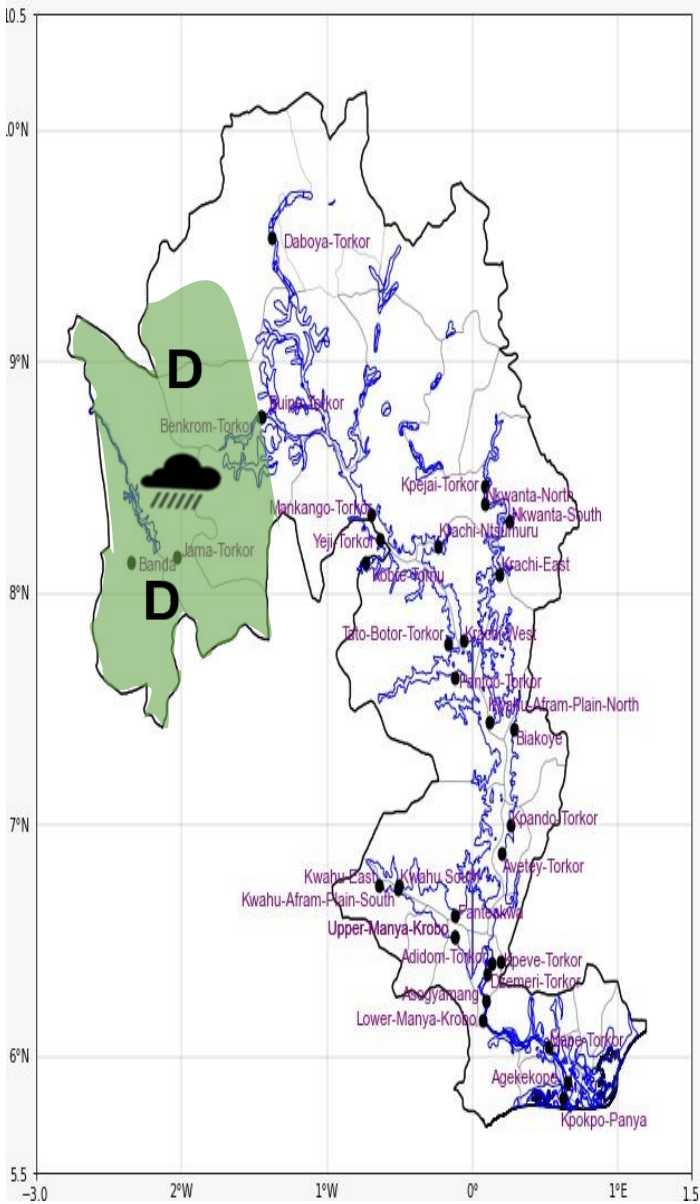
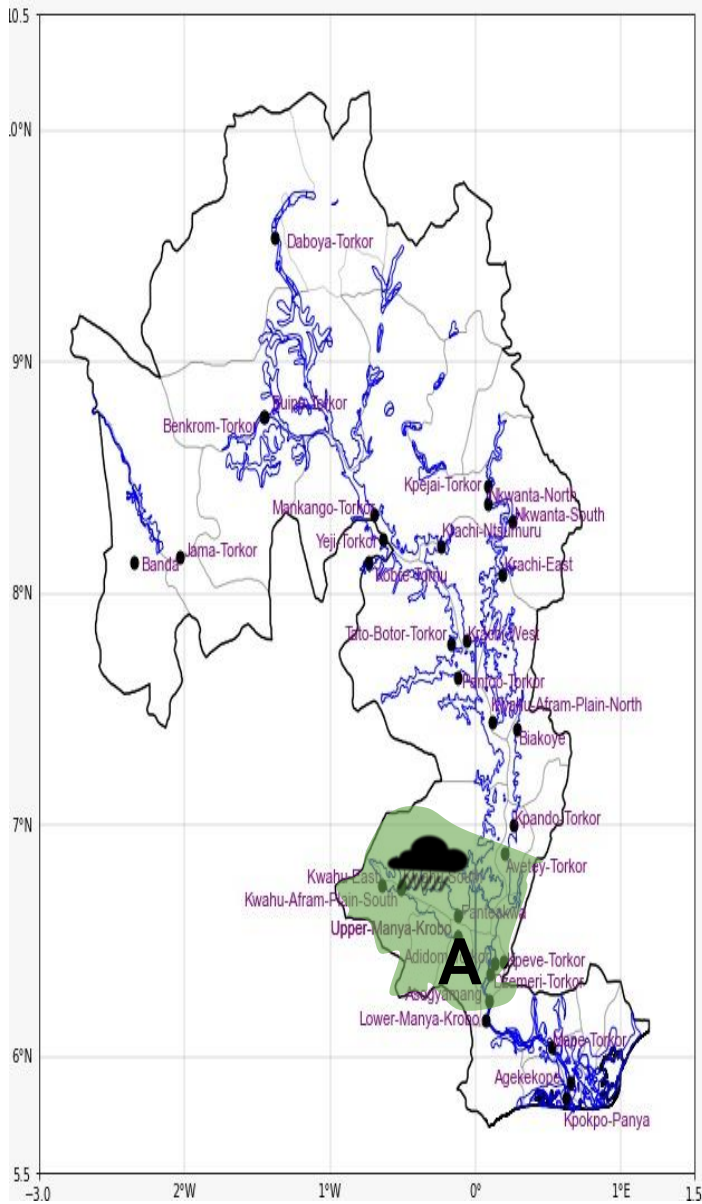




INLAND WATER IMPACT-BASED FORECAST
WEATHER SUMMARY

Clouds amid occasional sunshine are expected over the lake area during the afternoon, with a 30% chance of isolated thunderstorms and rain over the southern sector and a 40% chance over the northwestern portions in the evening.

AFTERNOON (12/12/2025)	EVENING (12/12/2025)	MORNING (13/12/2025)
------------------------	----------------------	----------------------



Date
12/12/2025
Time Issued
10:00 AM
Valid From
12:00 PM
Nowcasting Risk
Take Action
Be aware
Low risk
No risk

Likelihood	Weather Forecast Risk Table		
	High (>60%)	G	H
	Medium (40%-60%)	D	E
	Low (<40%)	A	B
		Low	Medium
		Impact	

Time	Surface Wind	Visibility	Temperature
12 hours	S/SE 05 Max 20 kt	(3 – 10) km	(23 – 35) °C
24 hours	S/SW 05 Max 16 kt	(3 – 10) km	(23 – 34) °C