



## INLAND WATER IMPACT-BASED FORECAST

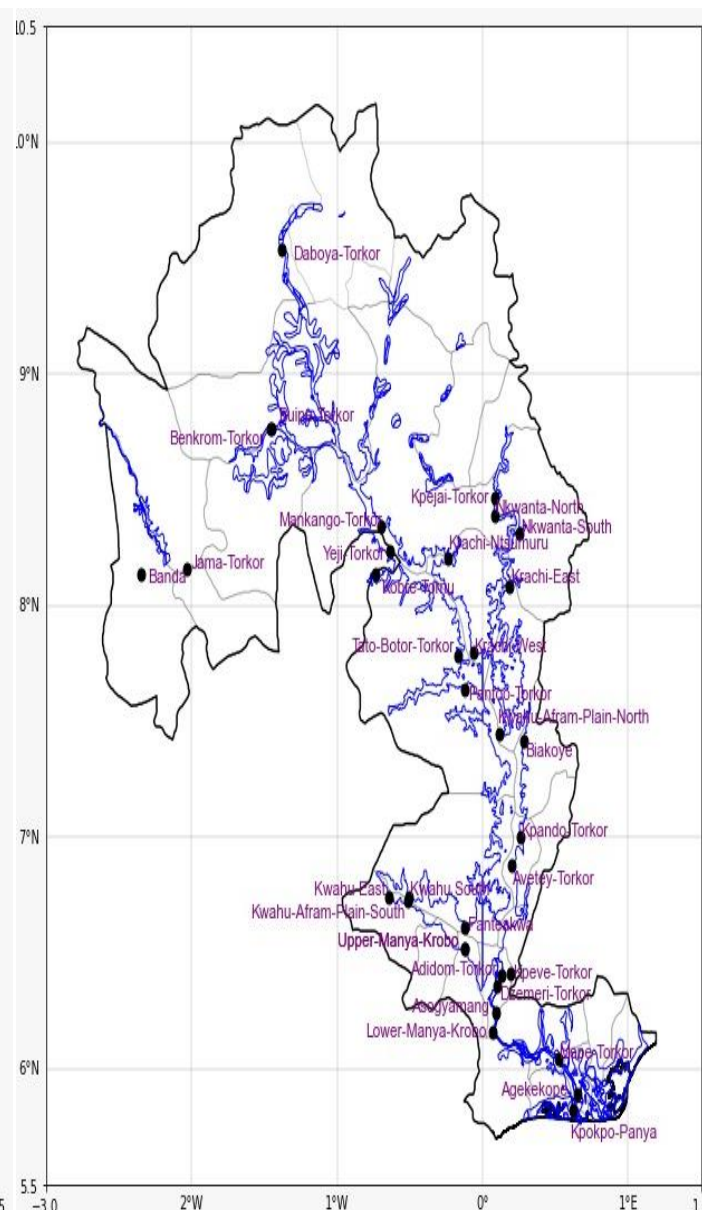
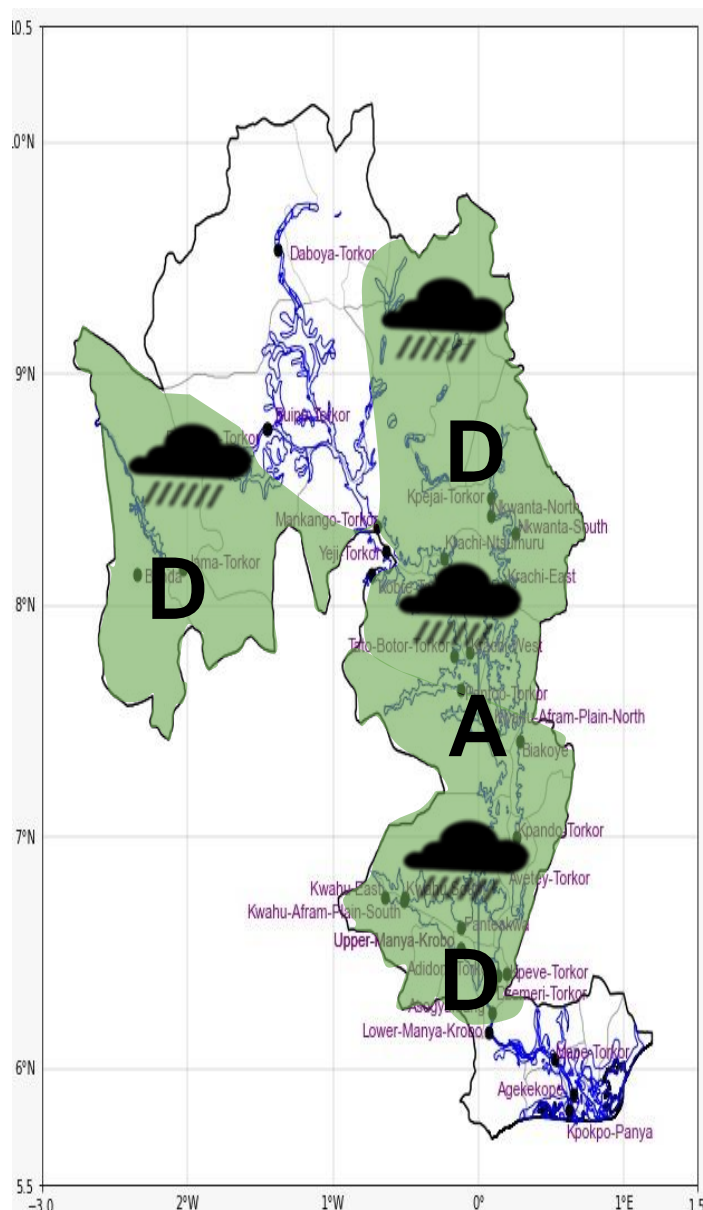
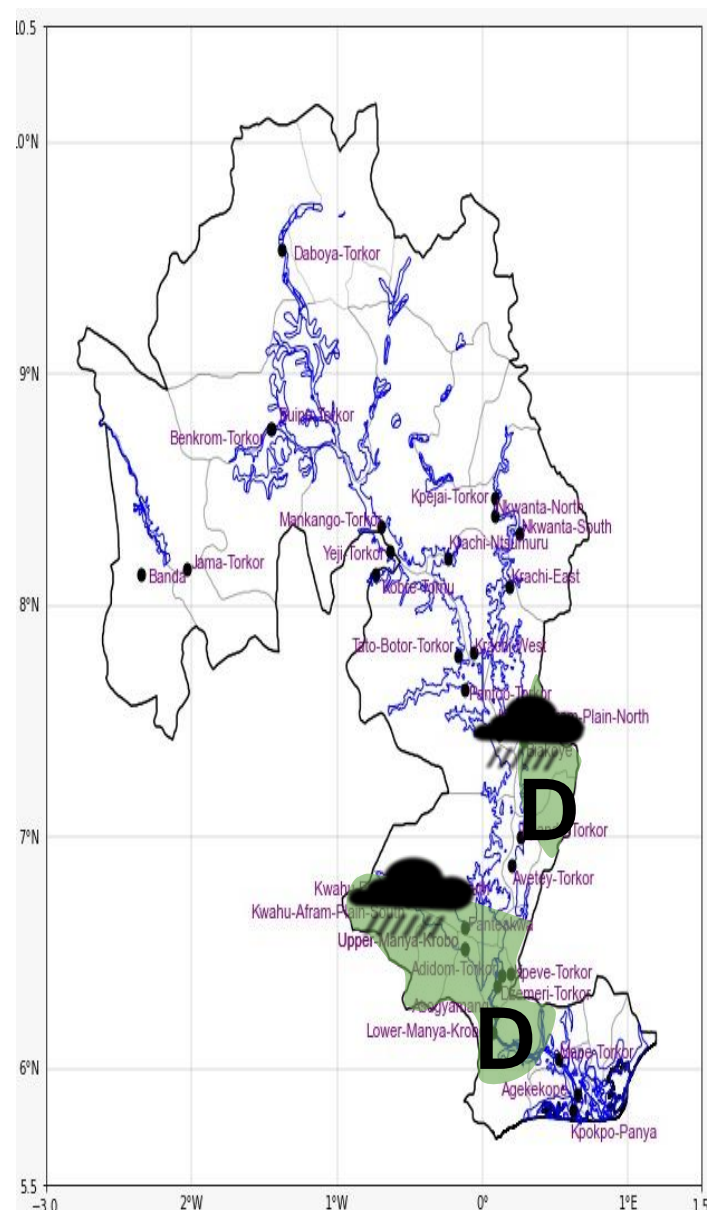
### WEATHER SUMMARY

Mostly cloudy conditions with sunshine periods are expected over the lake and its environs during the afternoon hours, however, there is a 30-40% likelihood of isolated thunderstorms and rain over the southern sector later in the afternoon and over most parts of the lake in the evening.

#### AFTERNOON (15/12/2025)

#### EVENING (15/12/2025)

#### MORNING (16/12/2025)



#### Date

15/12/2025

#### Time Issued

10:00 AM

#### Valid From

12:00 PM

#### Nowcasting Risk

Take Action

Be aware

Low risk

No risk

#### Weather Forecast Risk Table

Likelihood ↑

| High (>60%)      | G   | H      | I    |
|------------------|-----|--------|------|
| Medium (40%-60%) | D   | E      | F    |
| Low (<40%)       | A   | B      | C    |
|                  | Low | Medium | High |

Impact →

| Time     | Surface Wind         | Visibility  | Temperature  |
|----------|----------------------|-------------|--------------|
| 12 hours | N/NW 05<br>Max 27 kt | (3 – 10) km | (21 – 36) °C |
| 24 hours | N/NW 05<br>Max 19 kt | (2 – 10) km | (21 – 36) °C |