

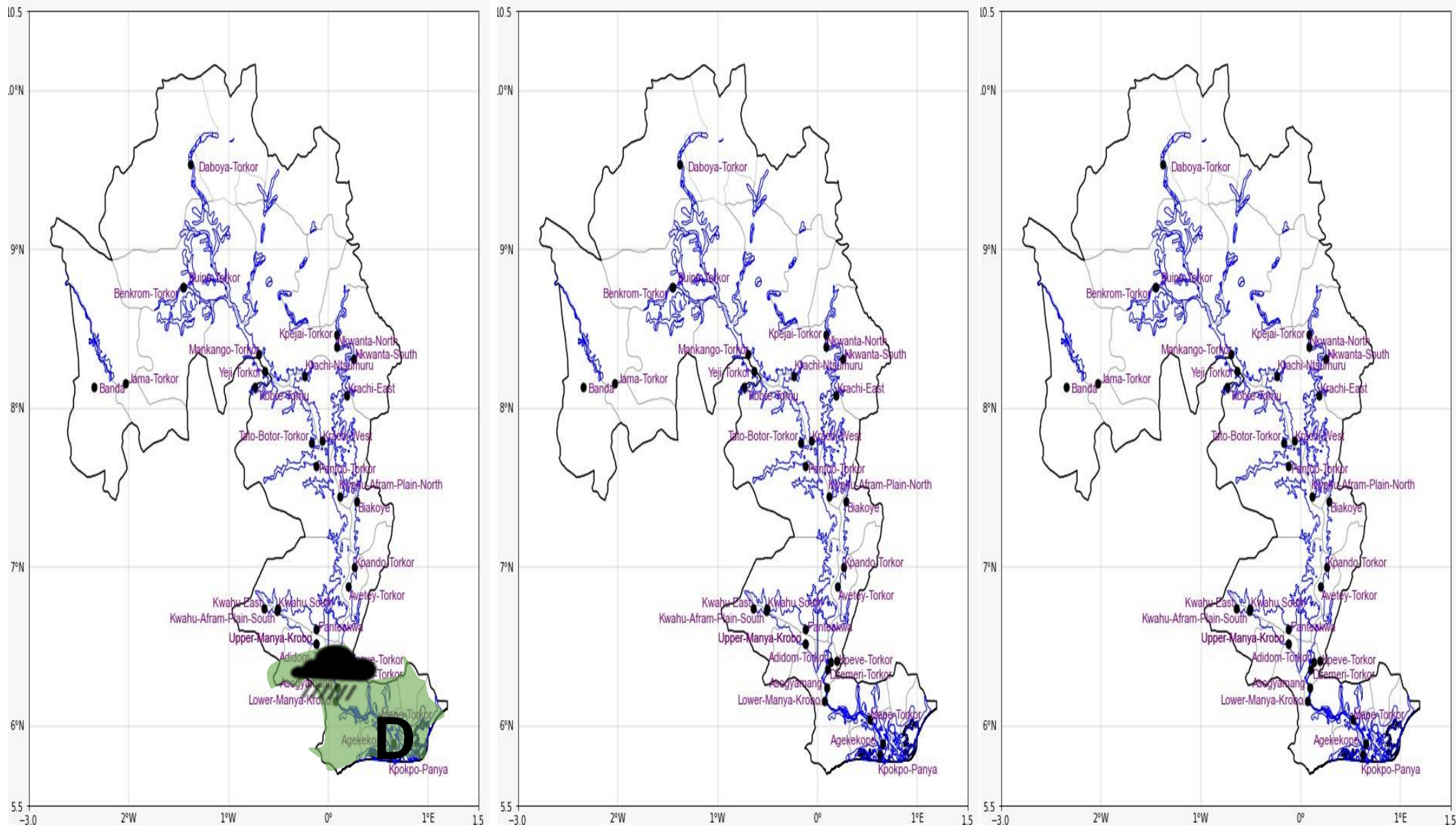


## INLAND WATER IMPACT-BASED FORECAST

### WEATHER SUMMARY

Periods of sunshine with occasional cloudiness are expected across the lake and its surroundings in the afternoon, however, there is a 30% likelihood of thunderstorms and rain over a few areas within the southern sector. Variably cloudy weather will be experienced in the evening through to the end of the forecast duration.

AFTERNOON (16/12/2025)	EVENING (16/12/2025)	MORNING (17/12/2025)
------------------------	----------------------	----------------------



Date
16/12/2025
Time Issued
10:00 AM
Valid From
12:00 PM
Nowcasting Risk
Take Action
Be aware
Low risk
No risk

Weather Forecast Risk Table				
Likelihood ↑	High (>60%)	G	H	I
	Medium (40%-60%)	D	E	F
	Low (<40%)	A	B	C
		Low	Medium	High
		Impact →		

Time	Surface Wind	Visibility	Temperature
12 hours	N/NE 05 Max 20 kt	(2 – 10) km	(25 – 36) °C
24 hours	S/SW 05 Max 18 kt	(2 – 10) km	(23 – 34) °C