

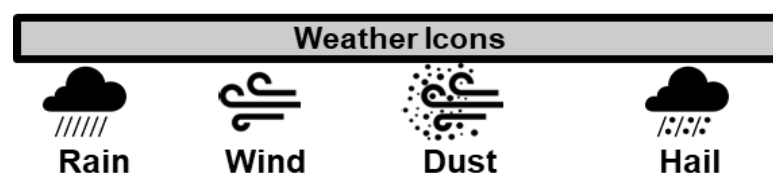
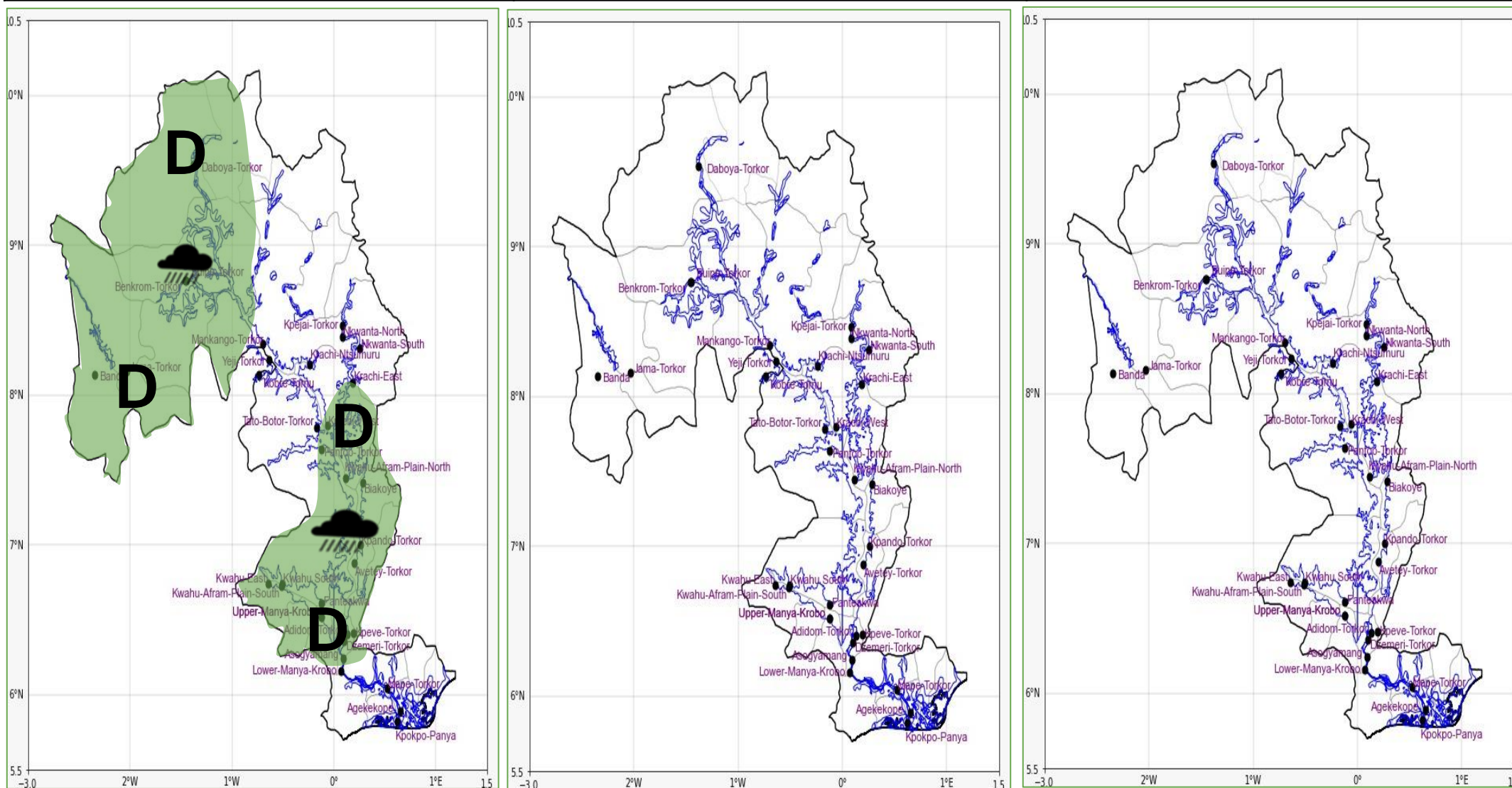


## INLAND WATER IMPACT-BASED FORECAST

### WEATHER SUMMARY

Variable cloud cover is expected throughout the entire lake area from the start to the end of the forecast timeframe. Nonetheless, intermittent light to moderate rain, accompanied by possible thunderstorms, is expected to persist in certain regions of the lake and nearby areas.

EVENING (16/12/2025)	MORNING (17/12/2025)	AFTERNOON (17/12/2025)
----------------------	----------------------	------------------------



Date
16/12/2025
Time Issued
4:00 PM
Valid From
06:00 PM
Nowcasting Risk
Low risk
No risk

Weather Forecast Risk Table				
Likelihood ↑	High (>60%)	G	H	I
	Medium (40%-60%)	D	E	F
	Low (<40%)	A	B	C
		Low	Medium	High
		Impact →		

Time	Surface Wind	Visibility	Temperature
12 hours	S/SW 05 Max 20 kt	(2 – 10) km	(23 – 31) °C
24 hours	S/SW 05 Max 18 kt	(2 – 10) km	(23 – 35) °C