

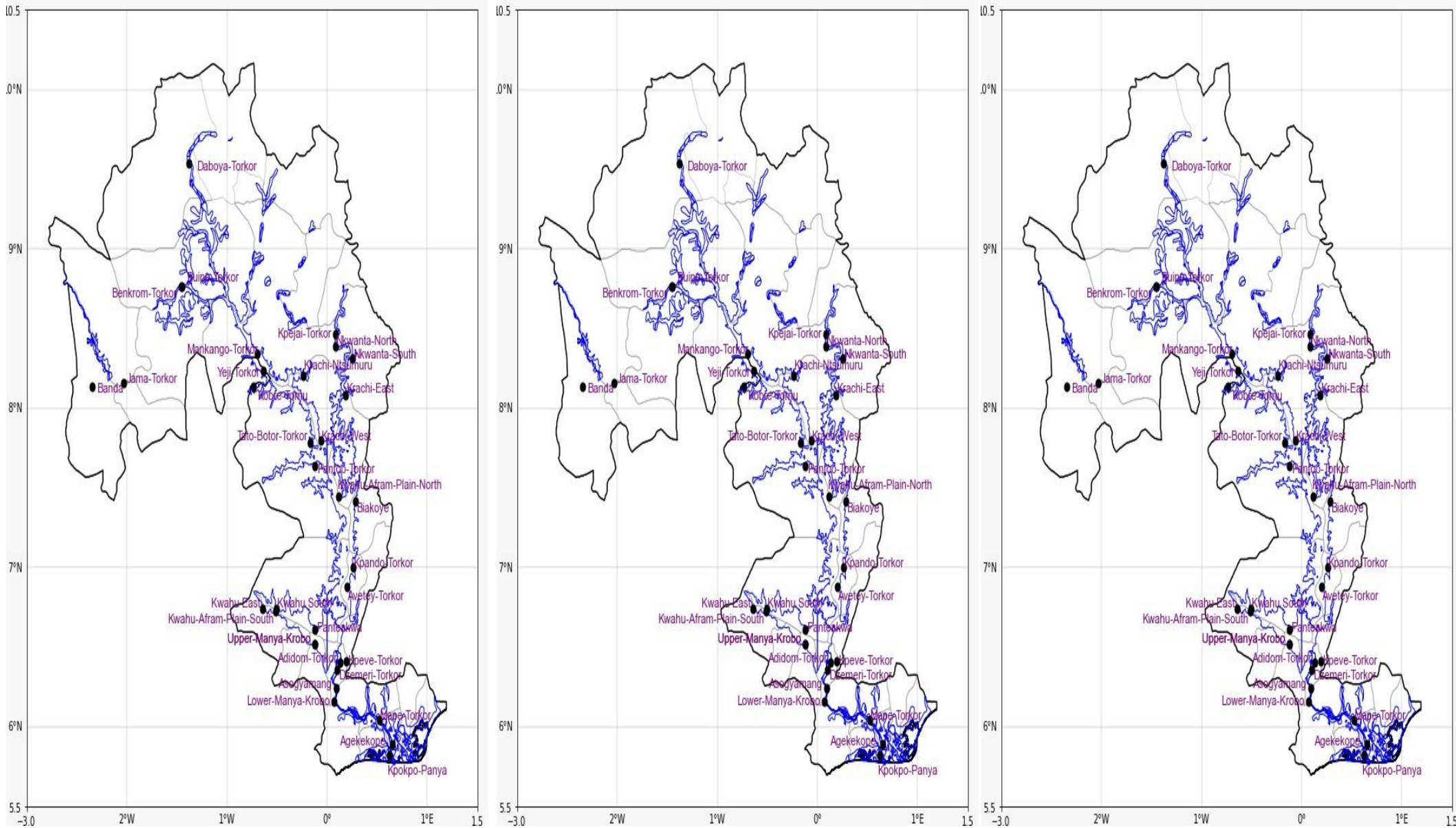


INLAND WATER IMPACT-BASED FORECAST

WEATHER SUMMARY

Sunny intervals are expected across various areas in the middle and southern portions of the lake in the afternoon, while sunshine breaks will be experienced in the northern sector. As the evening hours approach, variable clouds are expected to develop over the lake and its surroundings.

AFTERNOON (17/12/2025)	EVENING (17/12/2025)	MORNING (18/12/2025)
------------------------	----------------------	----------------------



Date
17/12/2025
Time Issued
10:00 AM
Valid From
12:00 PM
Nowcasting Risk
Take Action
Be aware
Low risk
No risk

Likelihood	Weather Forecast Risk Table		
	High (>60%)	G	H
	Medium (40%-60%)	D	E
	Low (<40%)	A	B
		Low	Medium
		High	
		Impact	

Time	Surface Wind	Visibility	Temperature
12 hours	S/SE 05 Max 21 kt	(5 – 10) km	(24 – 35) °C
24 hours	S/SW 05 Max 17 kt	(3 – 10) km	(23 – 34) °C