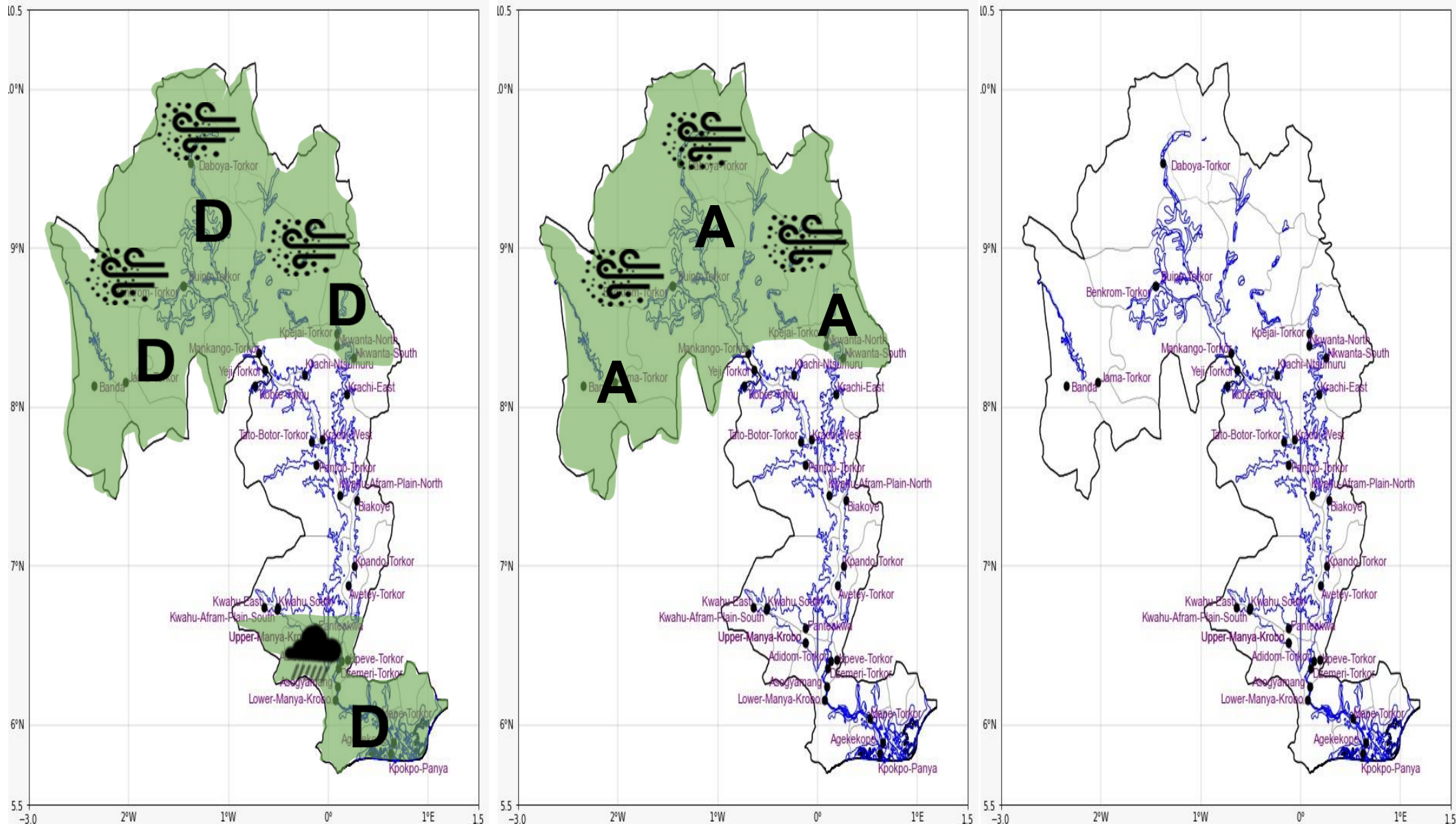




INLAND WATER IMPACT-BASED FORECAST
WEATHER SUMMARY

Expect periods of sunshine throughout the lake and its surroundings. However, from late afternoon into the evening, there is a 60% chance of isolated light to moderate rain, with or without thunderstorms, affecting parts of the southern areas of the lake and its vicinity. The northern sector is expected to remain fairly dry, with some hazy conditions.

AFTERNOON (21/12/2025)	EVENING (21/12/2025)	MORNING (22/12/2025)
------------------------	----------------------	----------------------



Date
21/12/2025
Time Issued
10:00 AM
Valid From
12:00 PM
Nowcasting Risk
Take Action
Be aware
Low risk
No risk

Weather Forecast Risk Table				
Likelihood ↑	High (>60%)	G	H	I
	Medium (40%-60%)	D	E	F
	Low (<40%)	A	B	C
		Low	Medium	High
		Impact →		

Time	Surface Wind	Visibility	Temperature
12 hours	S/SW 05 Max 16 kt	(4 – 10) km	(24 – 35) °C
24 hours	S/SW 05 Max 18 kt	(4 – 10) km	(23 – 34) °C