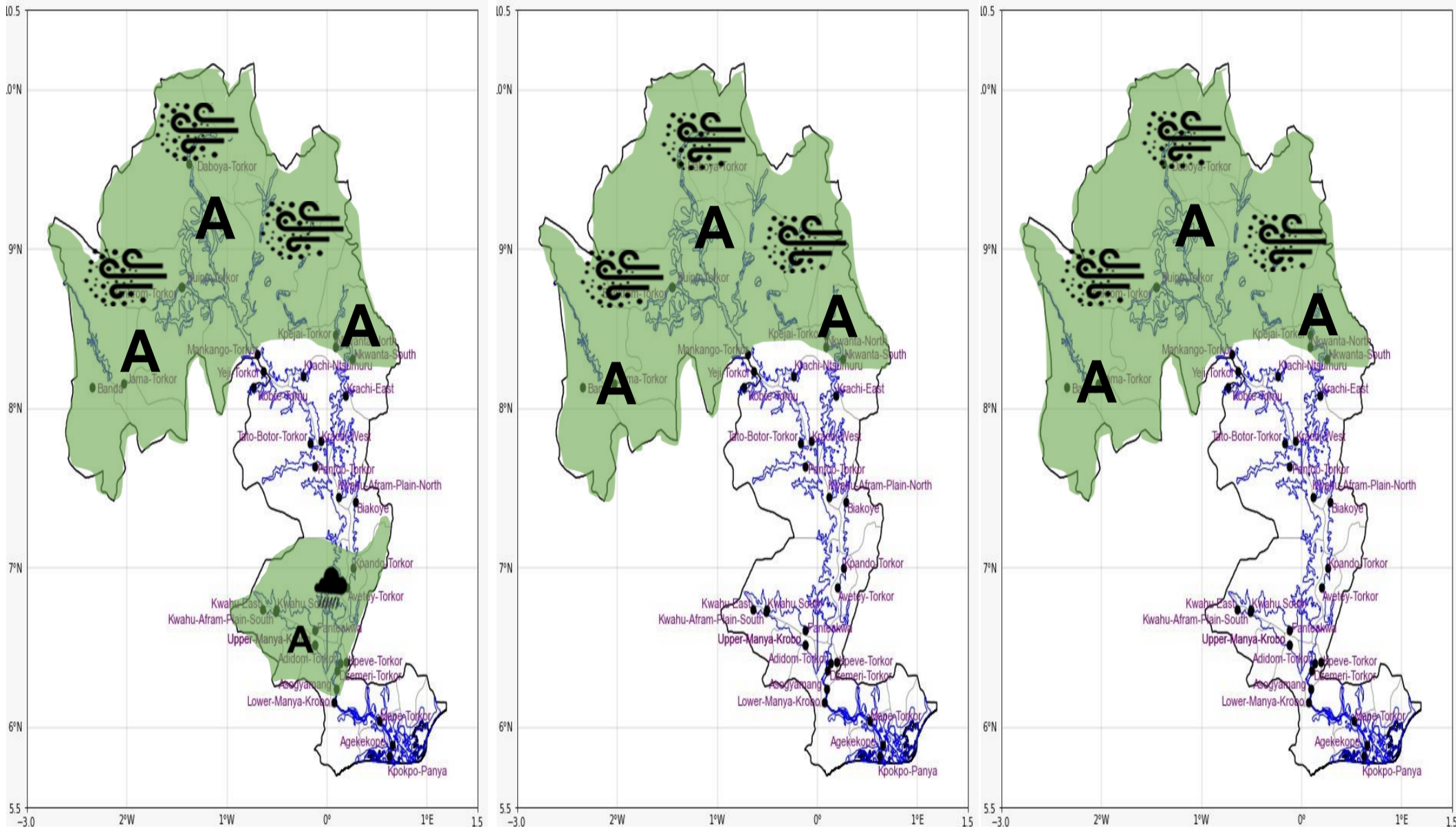




INLAND WATER IMPACT-BASED FORECAST
WEATHER SUMMARY

Periods of sunshine are expected across the lake's sectors during the afternoon hours. There is a 40% chance of isolated light to moderate rains over the southern half of the lake and its environs. However, fairly dry and slightly hazy conditions are anticipated over the northern sector throughout the forecast period.

AFTERNOON (23/12/2025)	EVENING (23/12/2025)	MORNING (24/12/2025)
------------------------	----------------------	----------------------



Date
23/12/2025
Time Issued
10:00 AM
Valid From
12:00 PM
Nowcasting Risk
Take Action
Be aware
Low risk
No risk

Weather Forecast Risk Table				
Likelihood ↑	High (>60%)	G	H	I
	Medium (40%-60%)	D	E	F
	Low (<40%)	A	B	C
		Low	Medium	High
		Impact →		

Time	Surface Wind	Visibility	Temperature
12 hours	S/SE 05 Max 18 kt	(4 – 10) km	(24 – 38) °C
24 hours	S/SW 05 Max 15 kt	(3 – 10) km	(22 – 34) °C