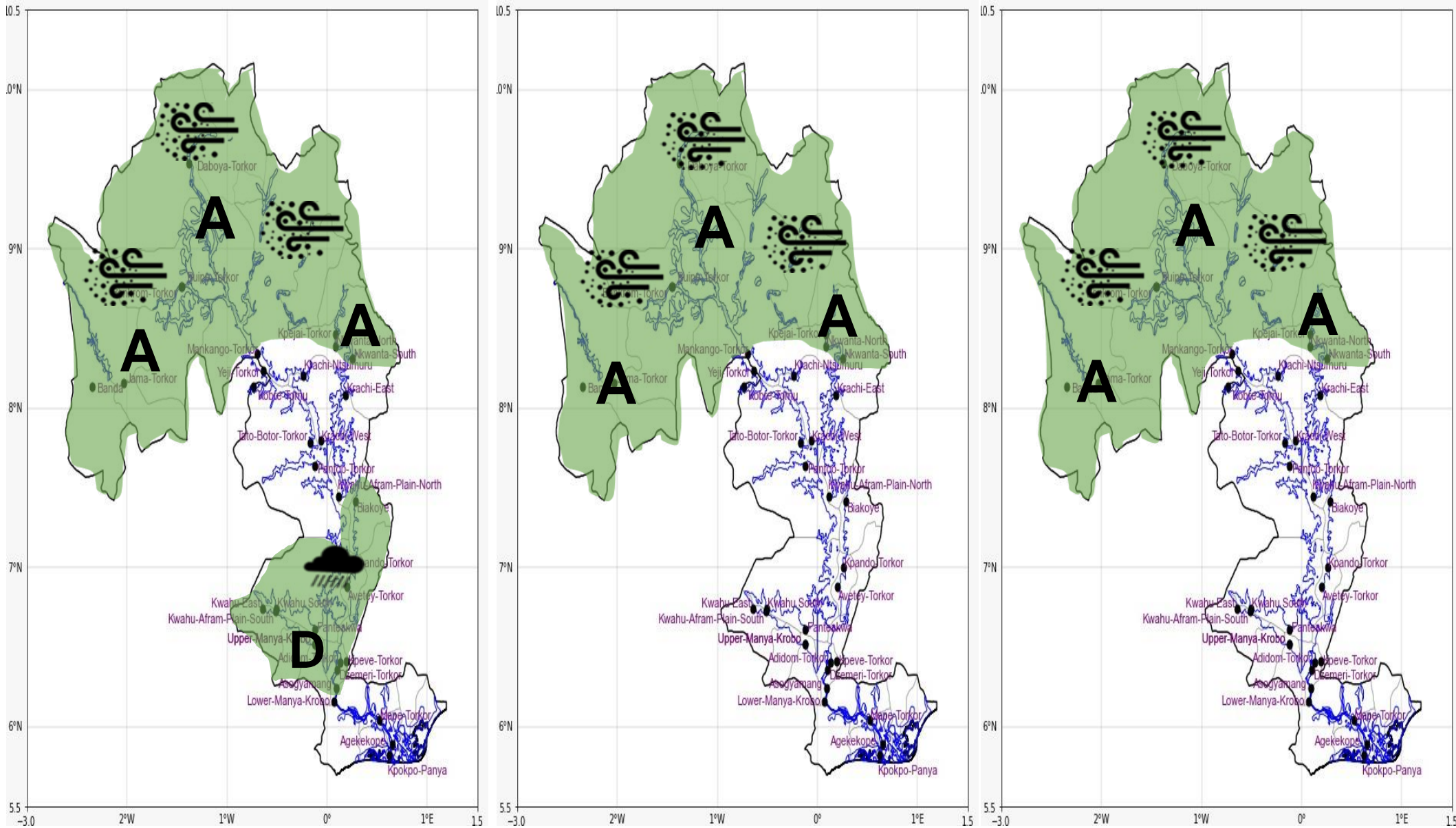




INLAND WATER IMPACT-BASED FORECAST
WEATHER SUMMARY

Sunny intervals are anticipated over the lake's areas during the afternoon. There is a 40% likelihood of isolated light to moderate rainfall across the southern portion of the lake and surrounding areas. Nevertheless, fairly dry and slightly hazy weather is expected in the northern region throughout the entire forecast duration.

AFTERNOON (24/12/2025)	EVENING (24/12/2025)	MORNING (25/12/2025)
------------------------	----------------------	----------------------



Date
24/12/2025
Time Issued
10:00 AM
Valid From
12:00 PM
Nowcasting Risk
Take Action
Be aware
Low risk
No risk

Likelihood	Weather Forecast Risk Table		
	High (>60%)	G	H
	Medium (40%-60%)	D	E
	Low (<40%)	A	B
		Low	Medium
		High	
		Impact	

Time	Surface Wind	Visibility	Temperature
12 hours	S/SE 05 Max 18 kt	(4 – 10) km	(24 – 38) °C
24 hours	S/SW 05 Max 15 kt	(3 – 10) km	(22 – 34) °C