

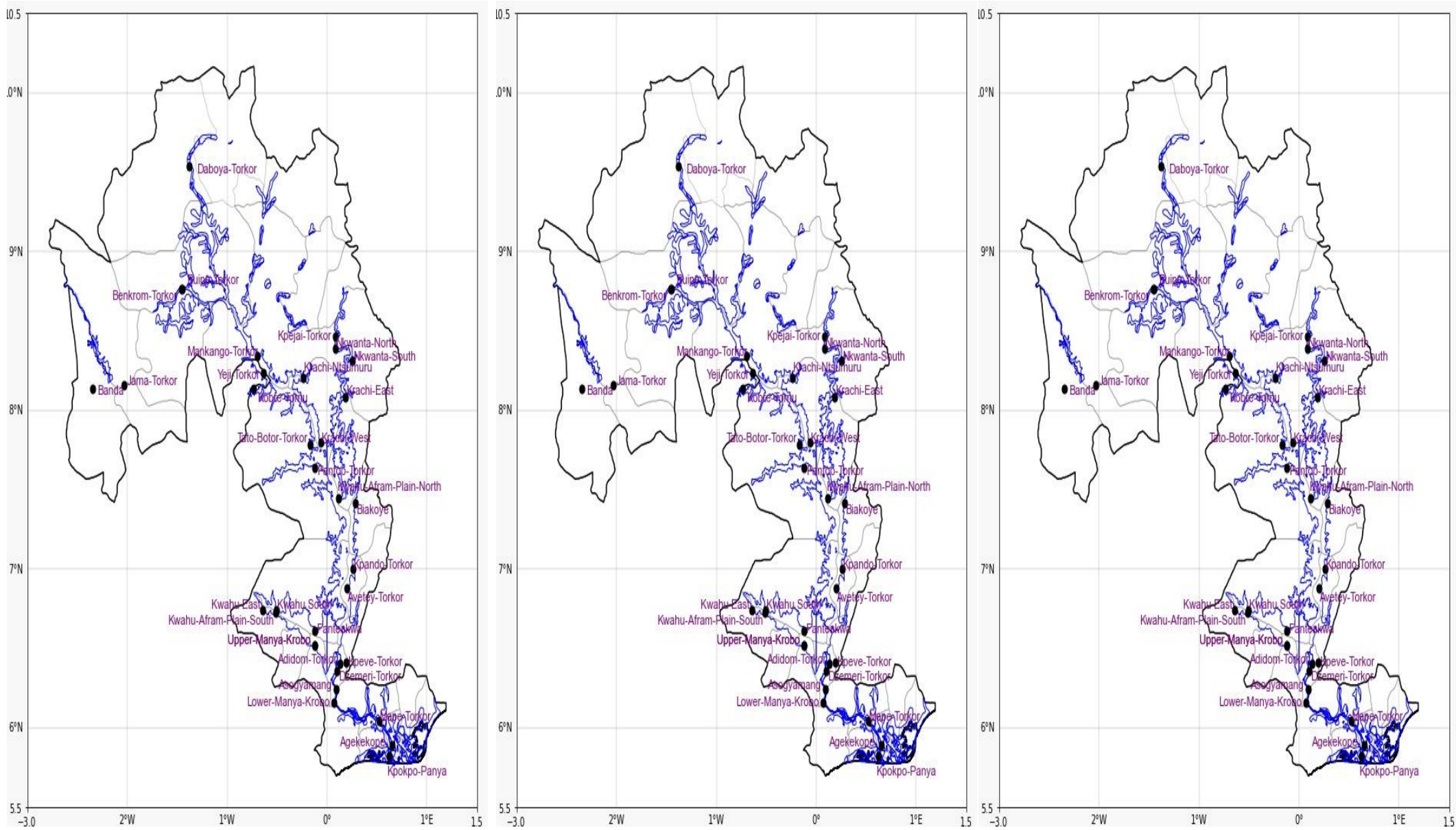


## INLAND WATER IMPACT-BASED FORECAST

### WEATHER SUMMARY

Periods of sunshine are expected over the lake and its surroundings during the afternoon hours. As the evening approaches, partly cloudy weather conditions are anticipated over the northern and middle sectors of the lake, whereas the southern portions will be variably cloudy.

AFTERNOON (25/12/2025)	EVENING (25/12/2025)	MORNING (26/12/2025)
------------------------	----------------------	----------------------



Date
25/12/2025
Time Issued
10:00 AM
Valid From
12:00 PM
Nowcasting Risk
Take Action
Be aware
Low risk
No risk

Likelihood ↑	Weather Forecast Risk Table		
	High (>60%)	G	H
	Medium (40%-60%)	D	E
	Low (<40%)	A	B
		Low	Medium
		High	
		Impact →	

Time	Surface Wind	Visibility	Temperature
24 hours	S/SE 05 Max 18 kt	(4 – 10) km	(22 – 37) °C
48 hours	S/SW 05 Max 15 kt	(4 – 10) km	(22 – 38) °C