

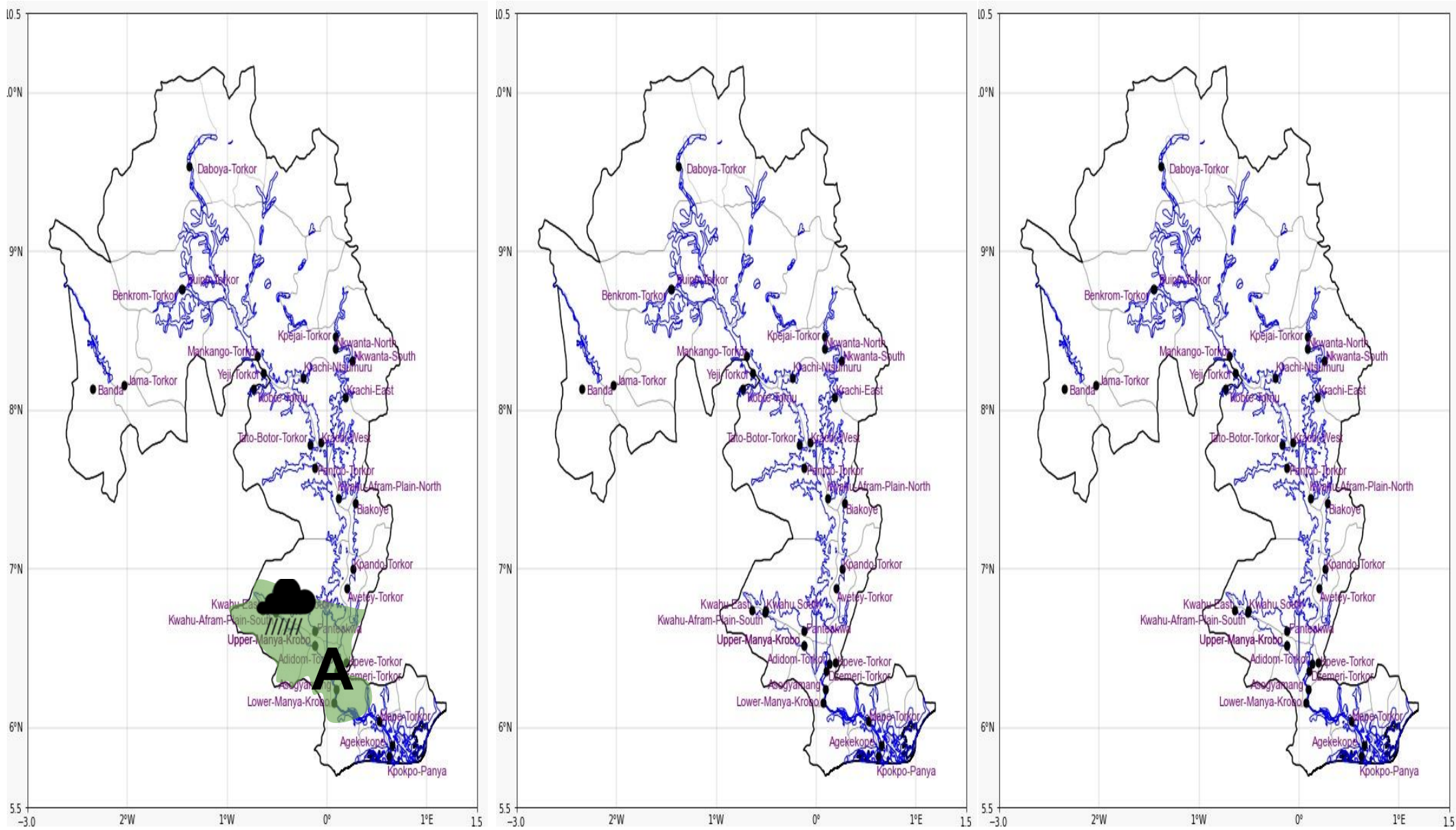


INLAND WATER IMPACT-BASED FORECAST

WEATHER SUMMARY

Variably cloudy weather conditions are expected over the lake and its surrounding communities tonight through to the end of the forecast period, however, there is a 30% likelihood of thunderstorms and rain over some isolated areas in the southern sector. Visibility is expected to be obscured by mist over the middle and southern portions of the lake during the early morning hours.

EVENING (25/12/2025)	MORNING (26/12/2025)	AFTERNOON (26/12/2025)
----------------------	----------------------	------------------------



Date
25/12/2025
Time Issued
4:00 PM
Valid From
06:00 PM
Nowcasting Risk
Take Action
Be aware
Low risk
No risk

Likelihood	Weather Forecast Risk Table		
	High (>60%)	G	H
	Medium (40%-60%)	D	E
	Low (<40%)	A	B
		Low	Medium
		High	
		Impact	

Time	Surface Wind	Visibility	Temperature
12 hours	SE/SW 05 Max 15 kt	(3 – 10) km	(24 – 31) °C
24 hours	SE/SW 05 Max 18 kt	(4 – 10) km	(24 – 38) °C