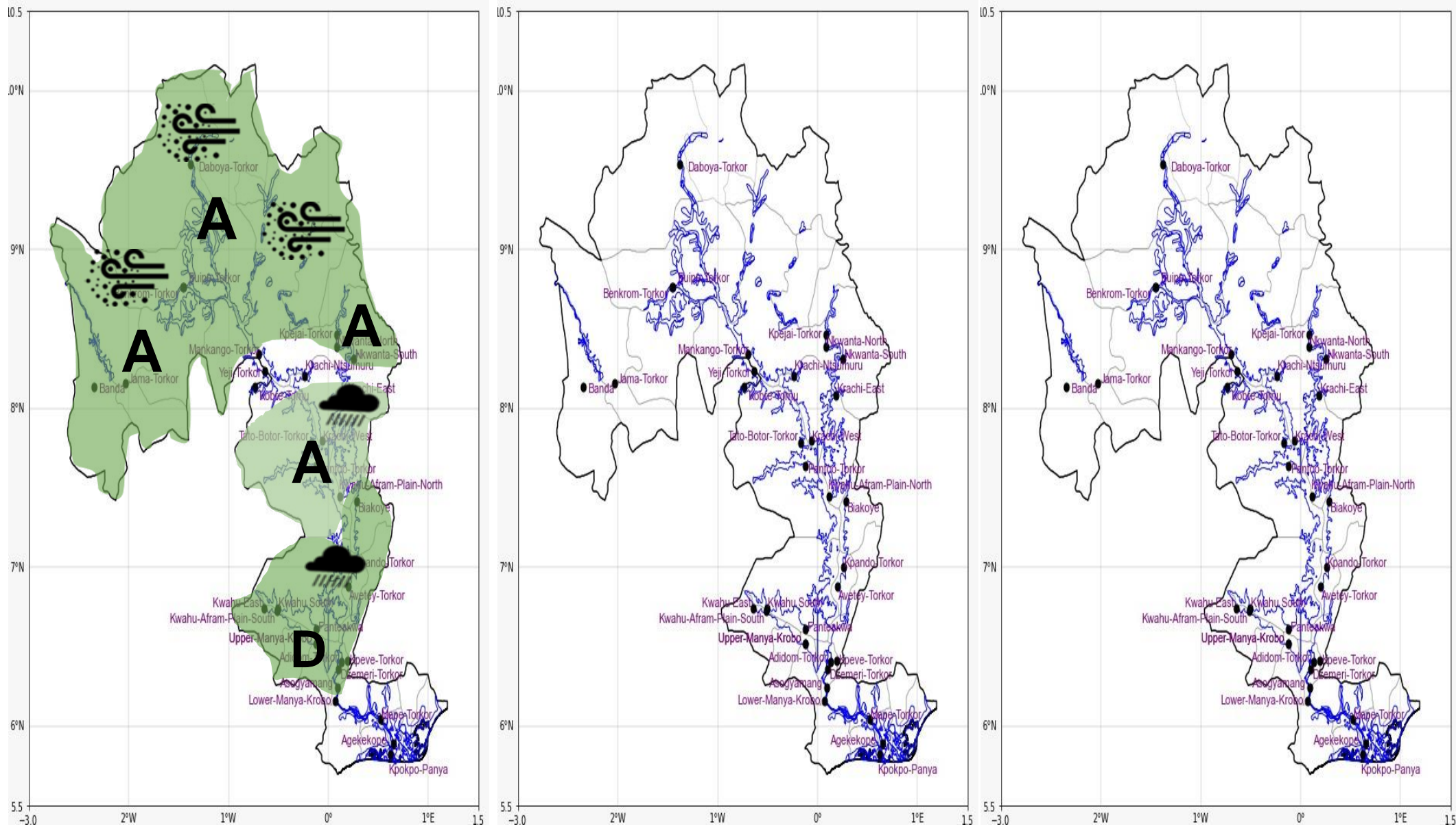




INLAND WATER IMPACT-BASED FORECAST  
WEATHER SUMMARY

Sunny intervals are expected over the lake areas during the afternoon. There is a 20% chance of isolated light to moderate rainfall over the southern portion of the lake and its surrounding areas from the late afternoon into the evening. Meanwhile, fairly dry and slightly hazy conditions are anticipated across the northern parts of the lake throughout the forecast period.

AFTERNOON (29/12/2025)	EVENING (29/12/2025)	MORNING (30/12/2025)
------------------------	----------------------	----------------------



Date
29/12/2025
Time Issued
10:00 AM
Valid From
12:00 PM
Nowcasting Risk
Take Action
Be aware
Low risk
No risk

Likelihood	Weather Forecast Risk Table		
	High (>60%)	G	H
	Medium (40%-60%)	D	E
	Low (<40%)	A	B
		Low	Medium
		Impact	

Time	Surface Wind	Visibility	Temperature
12 hours	S/SE 05 Max 18 kt	(4 – 10) km	(24 – 36) °C
24 hours	S/SW 05 Max 15 kt	(3 – 10) km	(22 – 37) °C