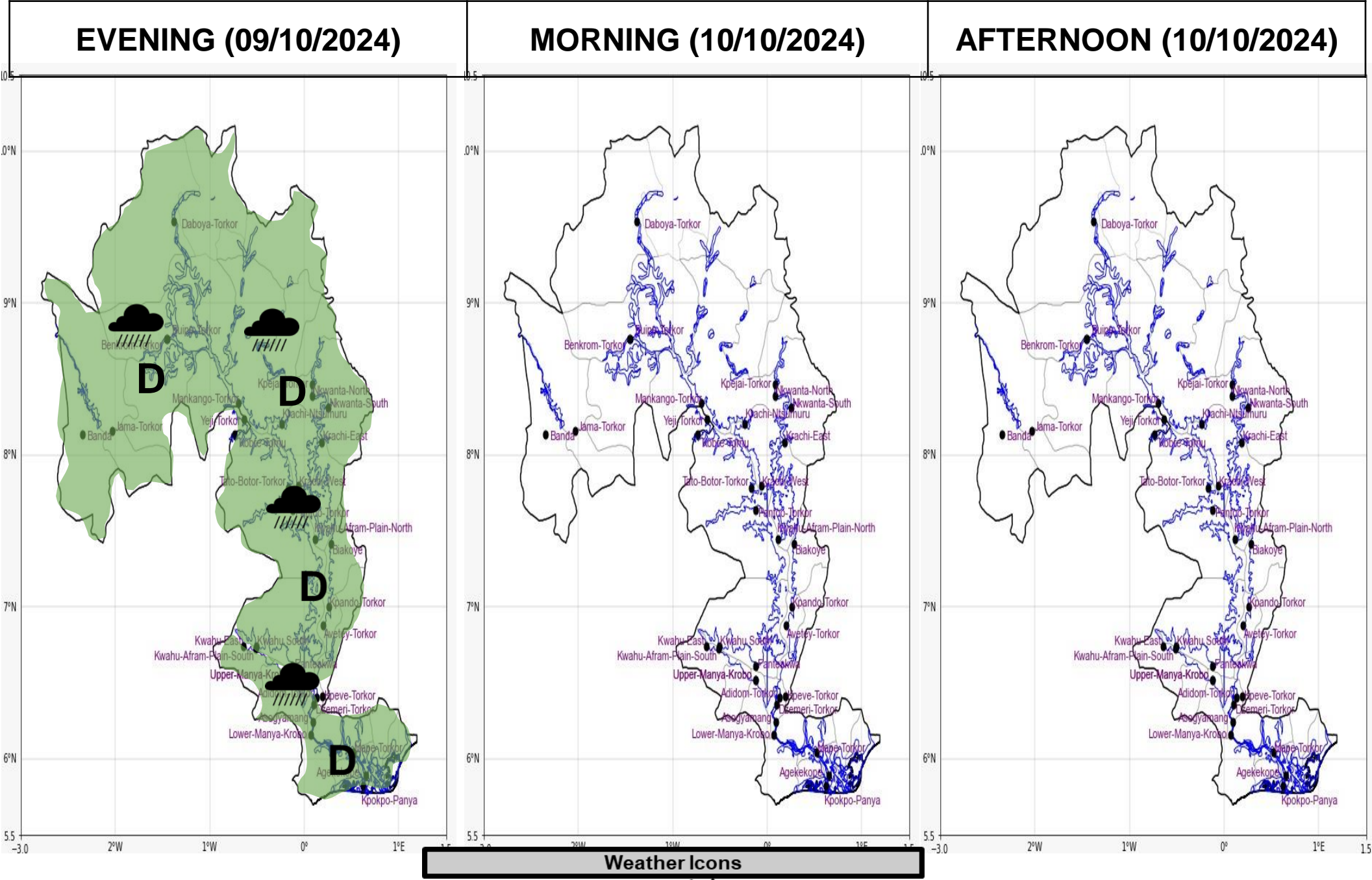




INLAND WATER IMPACT-BASED FORECAST
WEATHER SUMMARY

Throughout the course of the forecast period, variable cloudy weather is anticipated. However, this evening there is a 60% probability of isolated mild to moderate rain over the lake's enclave.



| Date |
|-----------------|
| 09/10/2024 |
| Time Issued |
| 04:00 PM |
| Valid From |
| 06:00 PM |
| Nowcasting Risk |
| Take Action |
| Be aware |
| Low risk |
| No risk |

| Weather Forecast Risk Table | | | |
|-----------------------------|------------------|----------|--------|
| Likelihood ↑ | High (>60%) | G | H |
| | Medium (40%-60%) | D | E |
| | Low (<40%) | A | B |
| | | Low | Medium |
| | | High | |
| | | Impact → | |

| Time | Surface Wind | Visibility | Temperature |
|----------|----------------------|------------|--------------|
| 24 hours | S/SE 05 Max 15 kt | (4 – 8) km | (22 – 32) °C |
| 48 hours | S/SE 05 Max 15 kt | (4 – 8) km | (22 – 32) °C |