

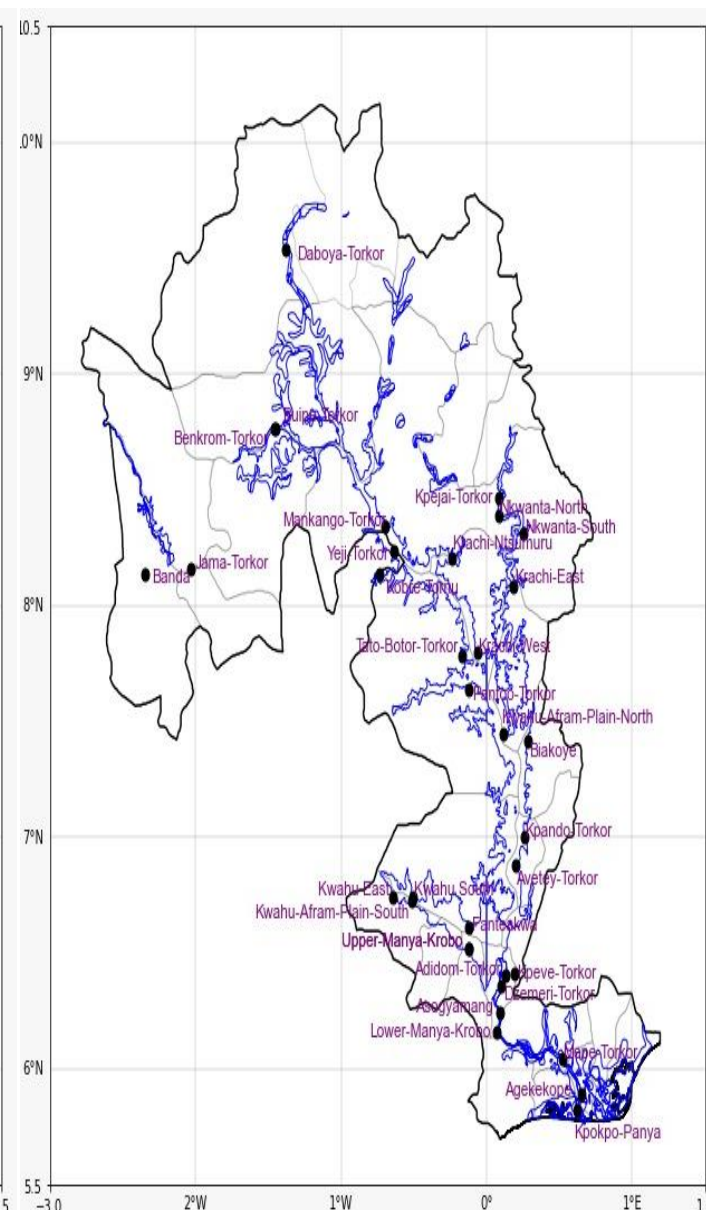
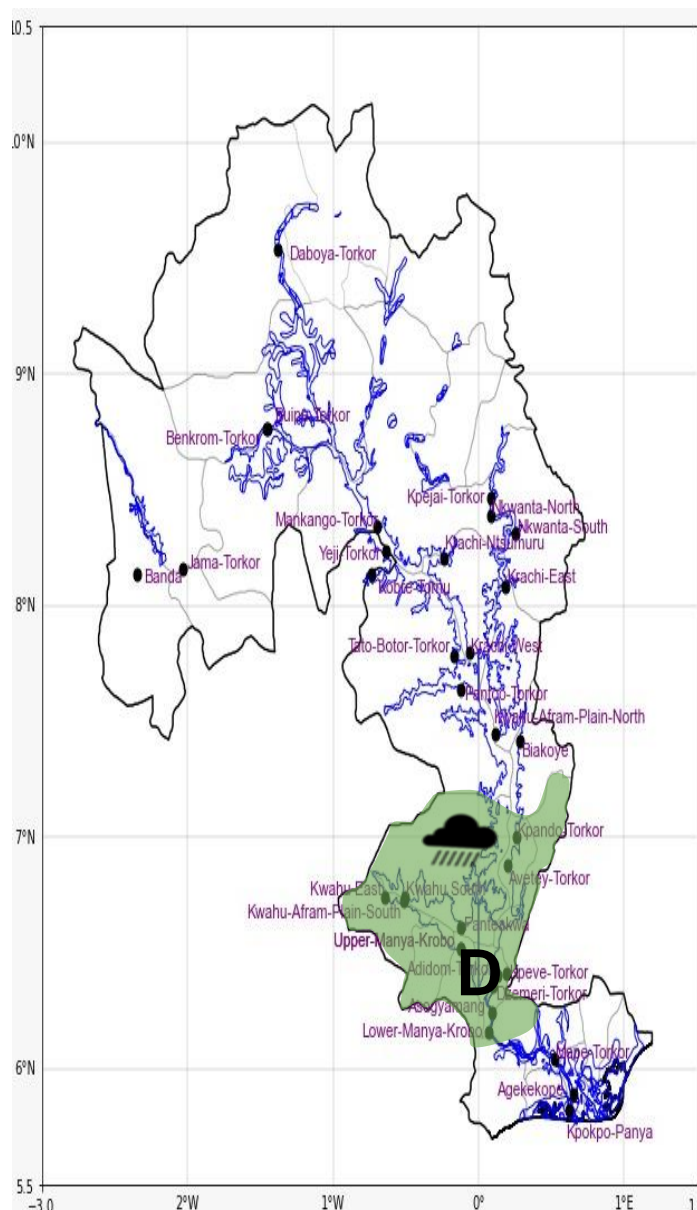
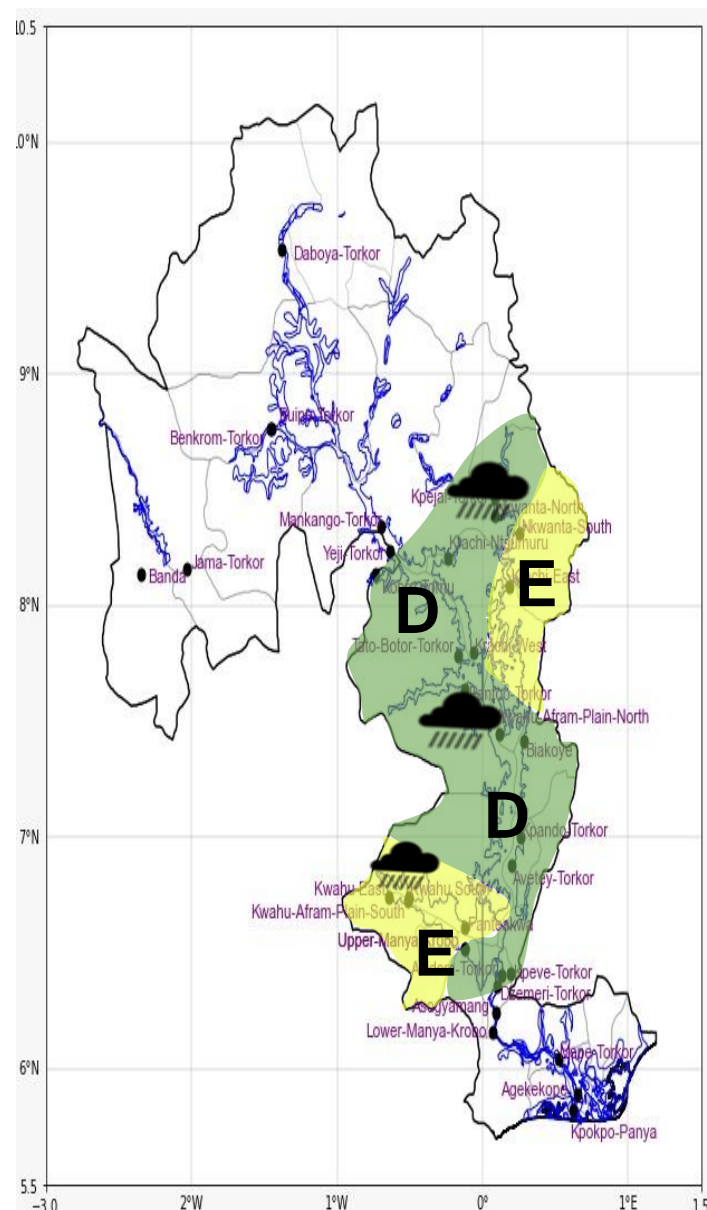


INLAND WATER IMPACT-BASED FORECAST

WEATHER SUMMARY

The lake and its nearby communities are anticipated to experience periods of sunshine during the afternoon hours. Rain-bearing clouds are, however, expected to form later in the day, producing isolated thunderstorms and varying intensities of rain over the middle and southern sectors of the lake area from late afternoon into the evening.

AFTERNOON (13/02/2026)	EVENING (13/02/2026)	MORNING (14/02/2026)
------------------------	----------------------	----------------------



Date
13/02/2026
Time Issued
10:00 AM
Valid From
12:00 PM
Nowcasting Risk
Take Action
Be aware
Low risk
No risk

<div>Likelihood</div> <div>↑</div>	Weather Forecast Risk Table			
	High (>60%)	G	H	I
	Medium (40%-60%)	D	E	F
	Low (<40%)	A	B	C
		Low	Medium	High
		Impact →		

Time	Surface Wind	Visibility	Temperature
12 hours	S/SE 05 Max 25 kt	(4 – 10) km	(22 – 37) °C
24 hours	S/SW 07 Max 20 kt	(5 – 10) km	(22 – 35) °C