

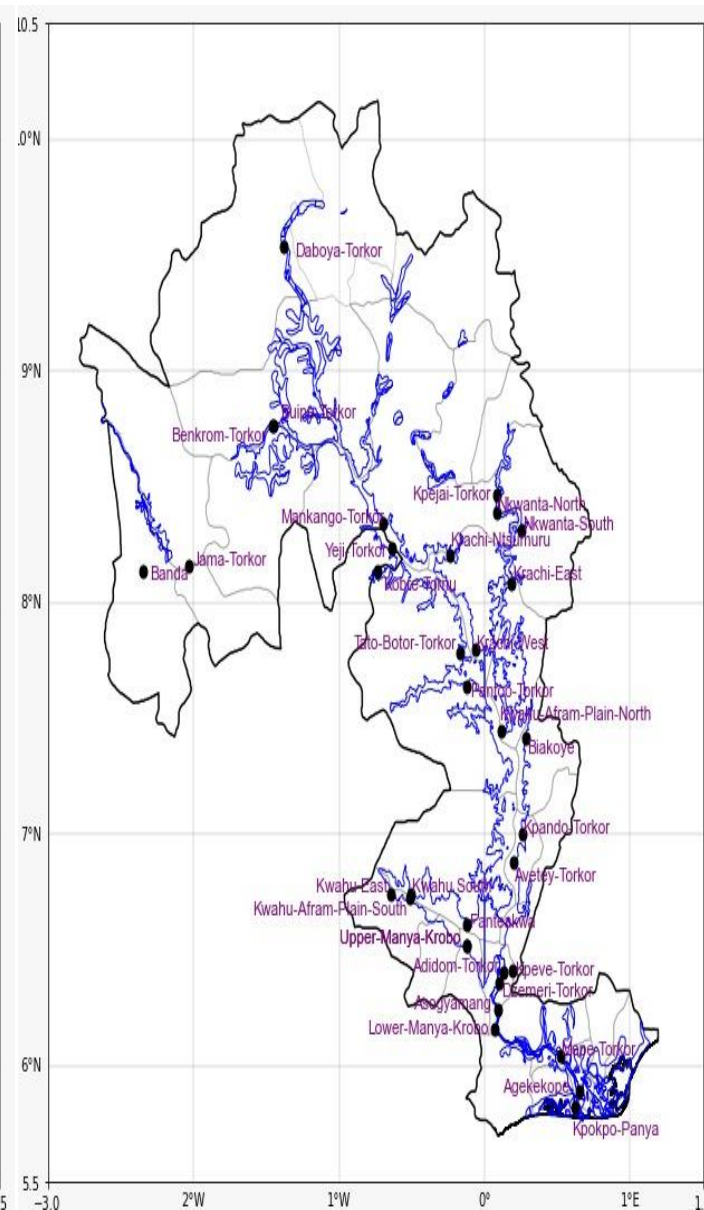
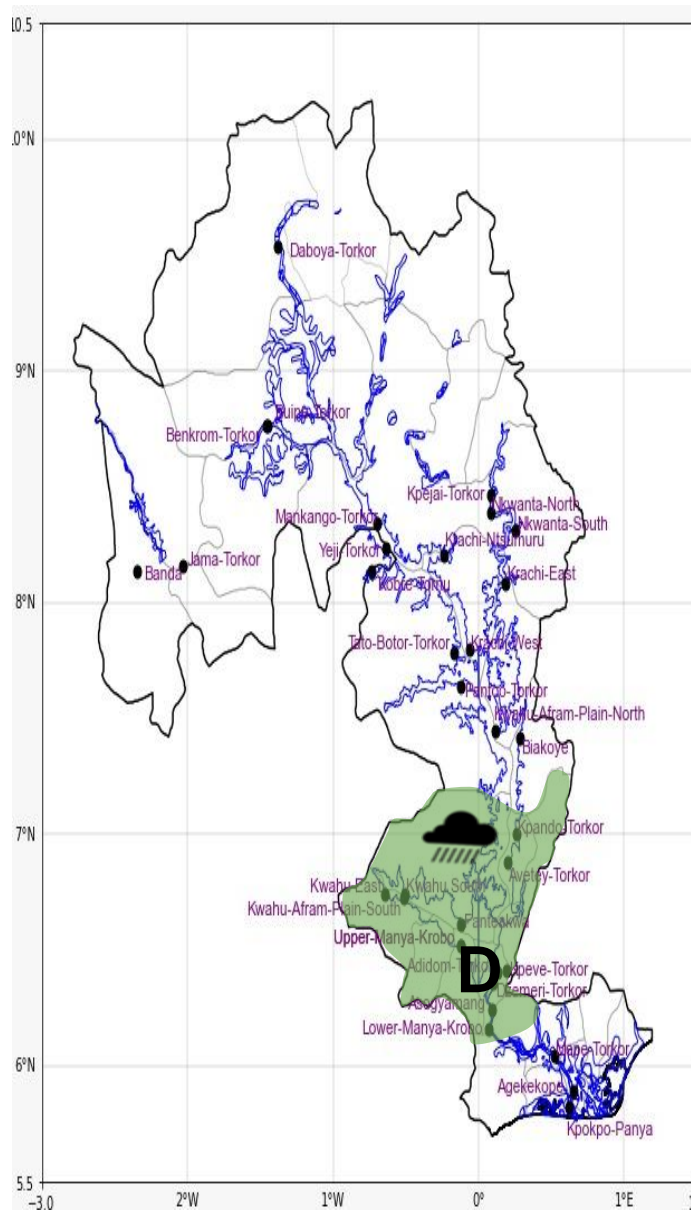
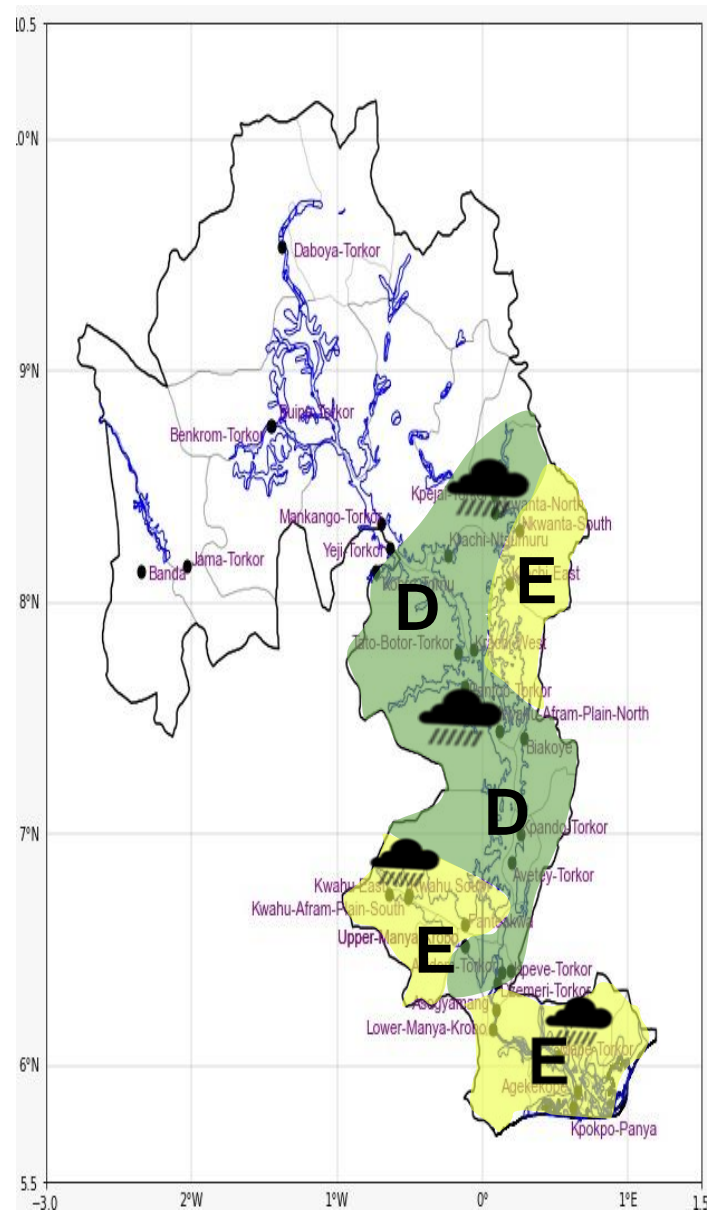


INLAND WATER IMPACT-BASED FORECAST

WEATHER SUMMARY

The lake and the surrounding areas are expected to have sunny intervals throughout the afternoon. Rain-producing clouds are anticipated to develop later today, resulting in scattered thunderstorms and different intensities of rain across the central and southern parts of the lake region from this afternoon through the evening

| AFTERNOON (14/02/2026) | EVENING (14/02/2026) | MORNING (15/02/2026) |
|------------------------|----------------------|----------------------|
|------------------------|----------------------|----------------------|



| |
|------------------------|
| Date |
| 14/02/2026 |
| Time Issued |
| 10:00 AM |
| Valid From |
| 12:00 PM |
| Nowcasting Risk |
| Take Action |
| Be aware |
| Low risk |
| No risk |

| | | | | |
|-----------------------------|------------------|----------|--------|------|
| Weather Forecast Risk Table | | | | |
| Likelihood ↑ | High (>60%) | G | H | I |
| | Medium (40%-60%) | D | E | F |
| | Low (<40%) | A | B | C |
| | | Low | Medium | High |
| | | Impact → | | |

| Time | Surface Wind | Visibility | Temperature |
|----------|----------------------|-------------|--------------|
| 12 hours | S/SW 05 Max 24 kt | (5 – 10) km | (25 – 34) °C |
| 24 hours | S/SW 06 Max 15 kt | (4 – 10) km | (24 – 34) °C |