

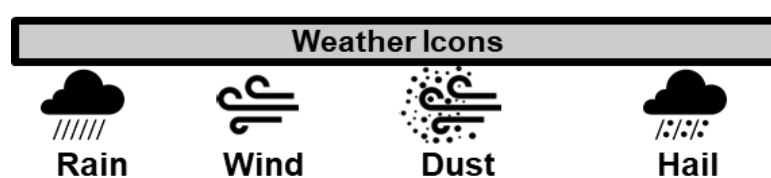
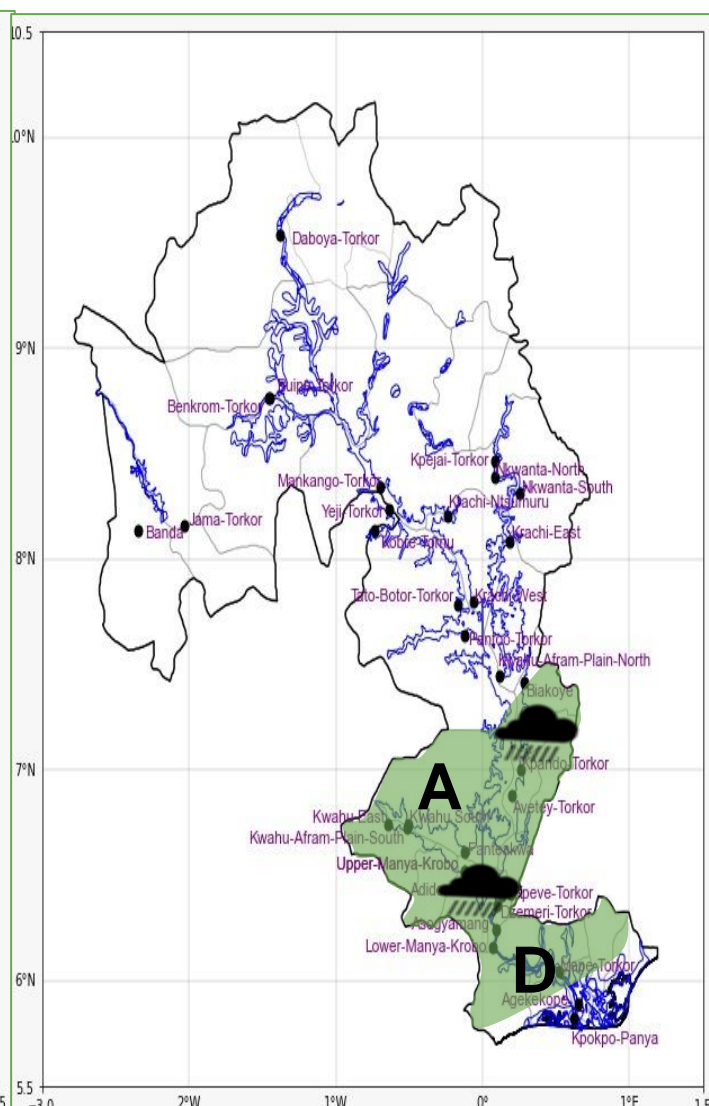
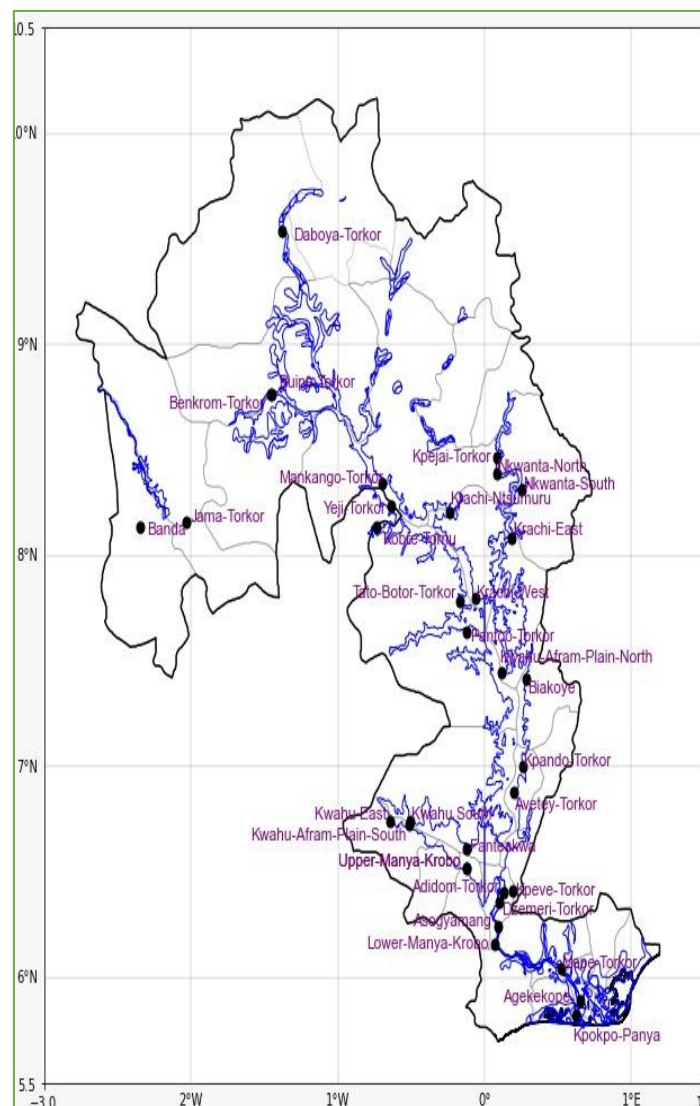
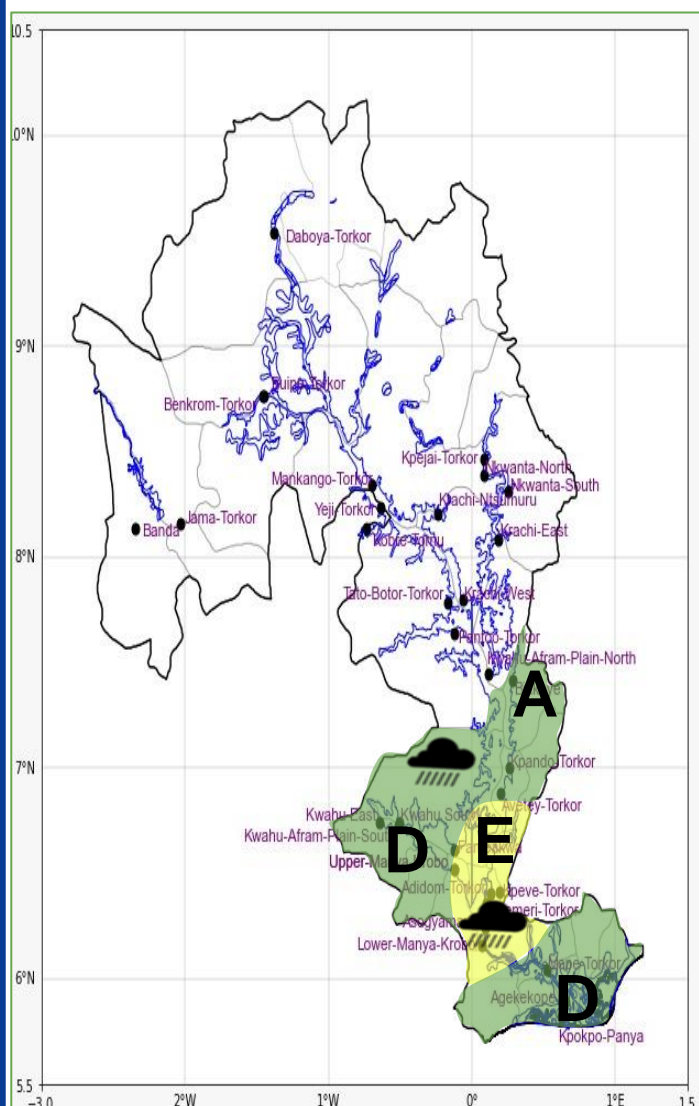


INLAND WATER IMPACT-BASED FORECAST

WEATHER SUMMARY

The lake and its surroundings will experience generally cloudy weather conditions, with isolated rainfall of varying intensities expected across the lake and nearby communities in the evening. Variable cloud cover is, however, anticipated over the lake and its surrounding areas during the morning hours.

EVENING (14/02/2026)	MORNING (15/02/2026)	AFTERNOON (15/02/2026)
----------------------	----------------------	------------------------



Date
14/02/2026
Time Issued
4:00 PM
Valid From
06:00 PM
Nowcasting Risk
Take Action
Be aware
Low risk
No risk

Weather Forecast Risk Table

Likelihood ↑	High (>60%)	G	H	I
	Medium (40%-60%)	D	E	F
	Low (<40%)	A	B	C
		Low	Medium	High

Impact →

Time	Surface Wind	Visibility	Temperature
12 hours	S/SW 05 Max 22 kt	(4 – 10) km	(23 – 34) °C
24 hours	S/SE 05 Max 20 kt	(5 – 10) km	(24 – 36) °C