

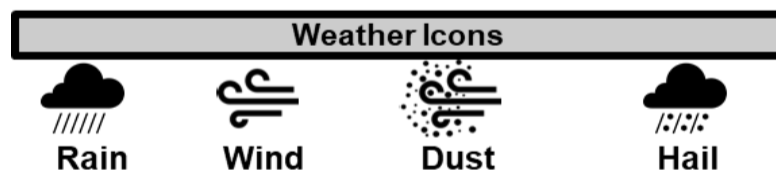
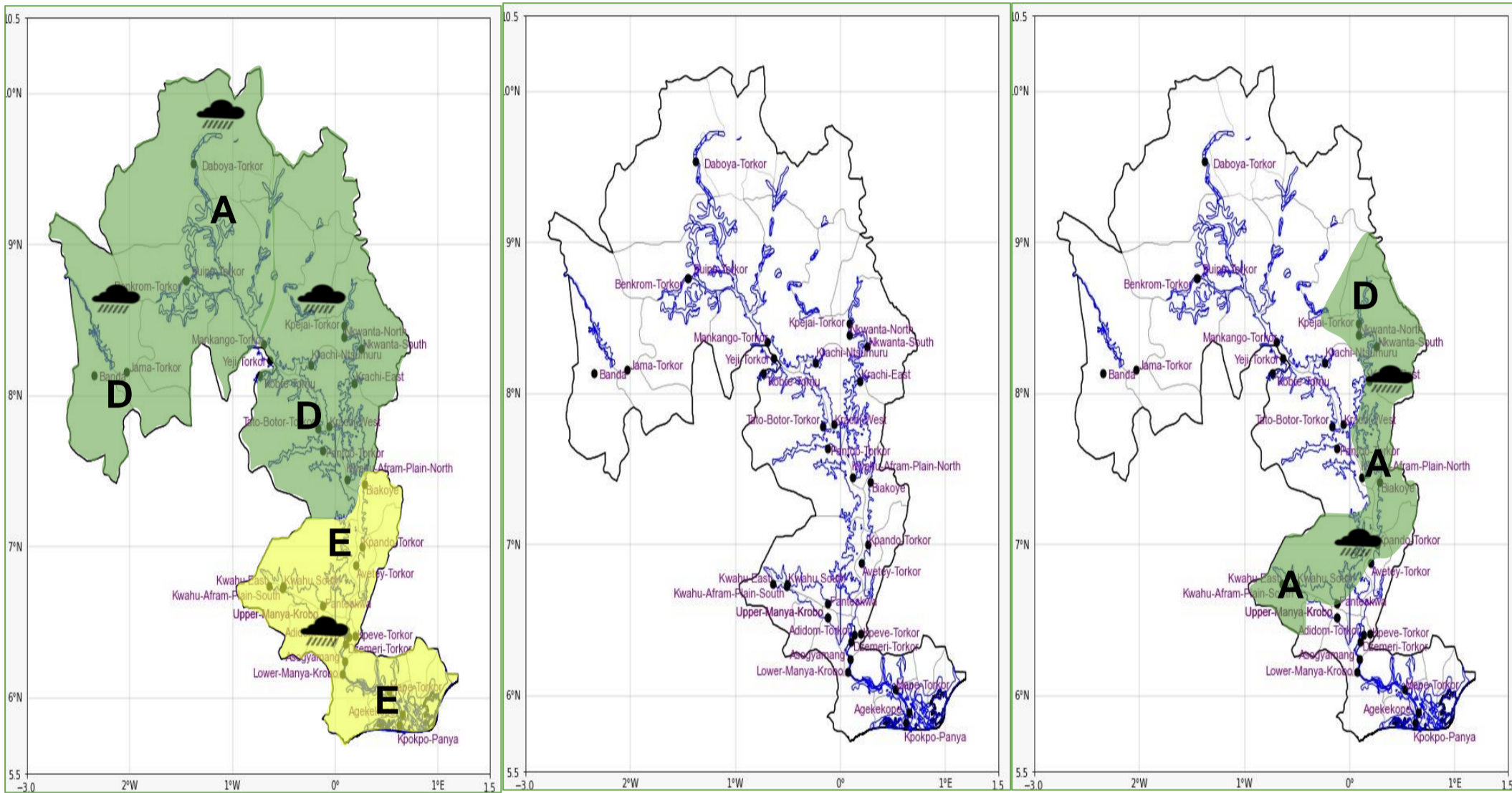


INLAND WATER IMPACT-BASED FORECAST

WEATHER SUMMARY

The lake and nearby communities are expected to experience variable cloud cover throughout the forecast period, with patches of mist over parts of the lake area reducing visibility during the early hours of the morning. There is, however, a 40% probability of isolated thunderstorms and light to moderate rainfall over the lake and its enclave in the evening, accompanied by strong winds.

EVENING (10/03/2026)	MORNING (11/03/2026)	AFTERNOON (11/03/2026)
----------------------	----------------------	------------------------



Date
10/03/2026
Time Issued
4:00 PM
Valid From
06:00 PM
Nowcasting Risk
Take Action
Be aware
Low risk
No risk

Weather Forecast Risk Table				
Likelihood ↑	High (>60%)	G	H	I
	Medium (40%-60%)	D	E	F
	Low (<40%)	A	B	C
		Low	Medium	High
		Impact →		

Time	Surface Wind	Visibility	Temperature
12 hours	S/SW 05 Max 23 kt	(5 – 10) km	(23 – 36) °C
24 hours	S/SW 05 Max 22 kt	(5 – 10) km	(23 – 37) °C