

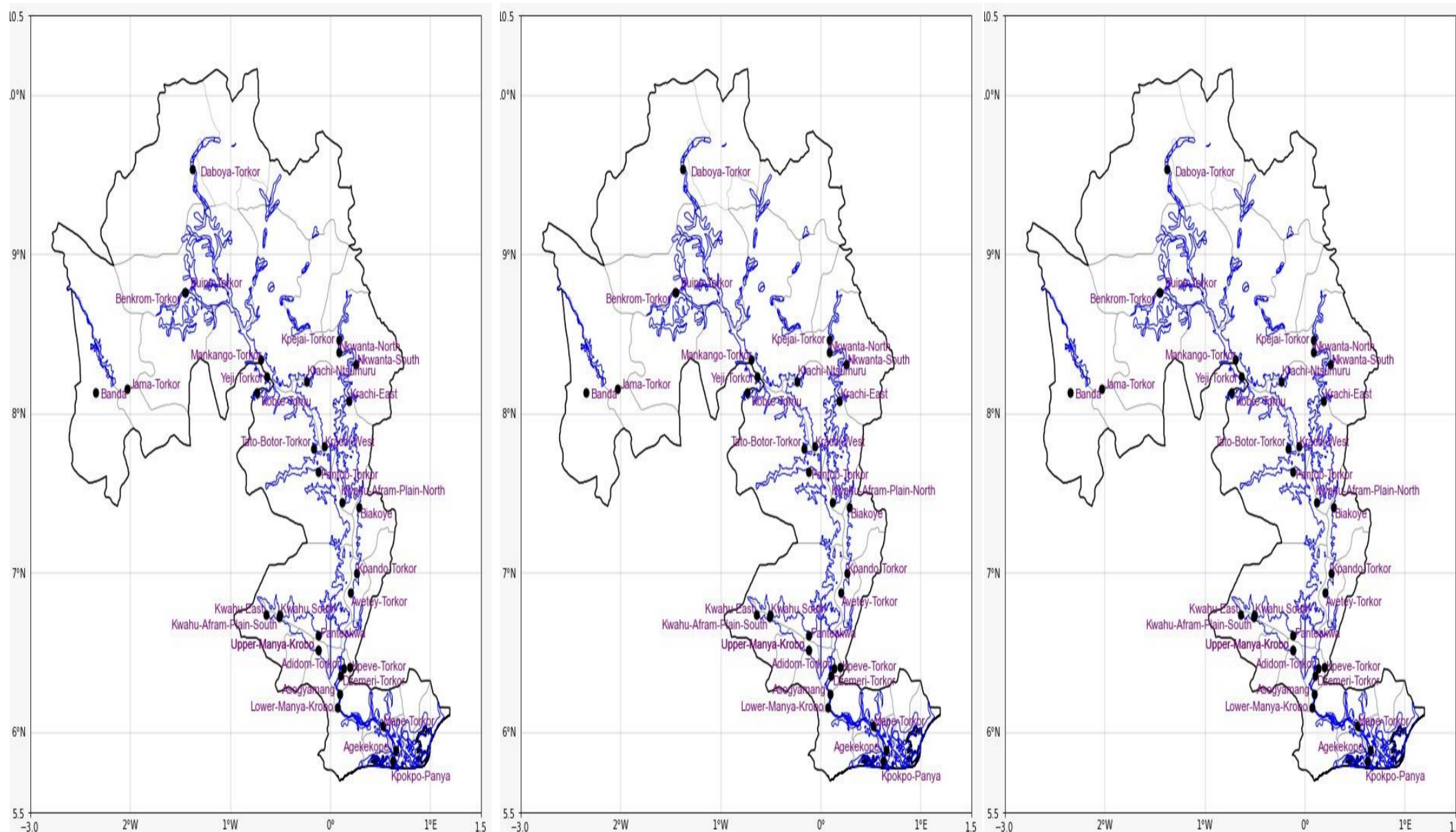


## INLAND WATER IMPACT-BASED FORECAST

### WEATHER SUMMARY

Clouds amidst sunshine breaks are expected over the lake and its surroundings during the afternoon period. The cloudiness is expected to persist over the northern and the middle sectors as the evening approaches, whereas the southern portion will be variably cloudy.

| AFTERNOON (13/03/2026) | EVENING (13/03/2026) | MORNING (14/03/2026) |
|------------------------|----------------------|----------------------|
|------------------------|----------------------|----------------------|



| Date               |
|--------------------|
| 13/03/2026         |
| Time Issued        |
| 10:00 AM           |
| Valid From         |
| 12:00 PM           |
| Nowcasting Risk    |
| <b>Take Action</b> |
| <b>Be aware</b>    |
| <b>Low risk</b>    |
| <b>No risk</b>     |

| Likelihood ↑ | Weather Forecast Risk Table |        |      |   |
|--------------|-----------------------------|--------|------|---|
|              | High (>60%)                 | G      | H    | I |
|              | Medium (40%-60%)            | D      | E    | F |
| Low (<40%)   | A                           | B      | C    |   |
|              | Low                         | Medium | High |   |
|              | Impact →                    |        |      |   |

| Time     | Surface Wind         | Visibility  | Temperature  |
|----------|----------------------|-------------|--------------|
| 12 hours | N/SE 05<br>Max 20 kt | (5 – 10) km | (24 – 38) °C |
| 24 hours | S/SE 05<br>Max 20 kt | (5 – 10) km | (24 – 38) °C |