

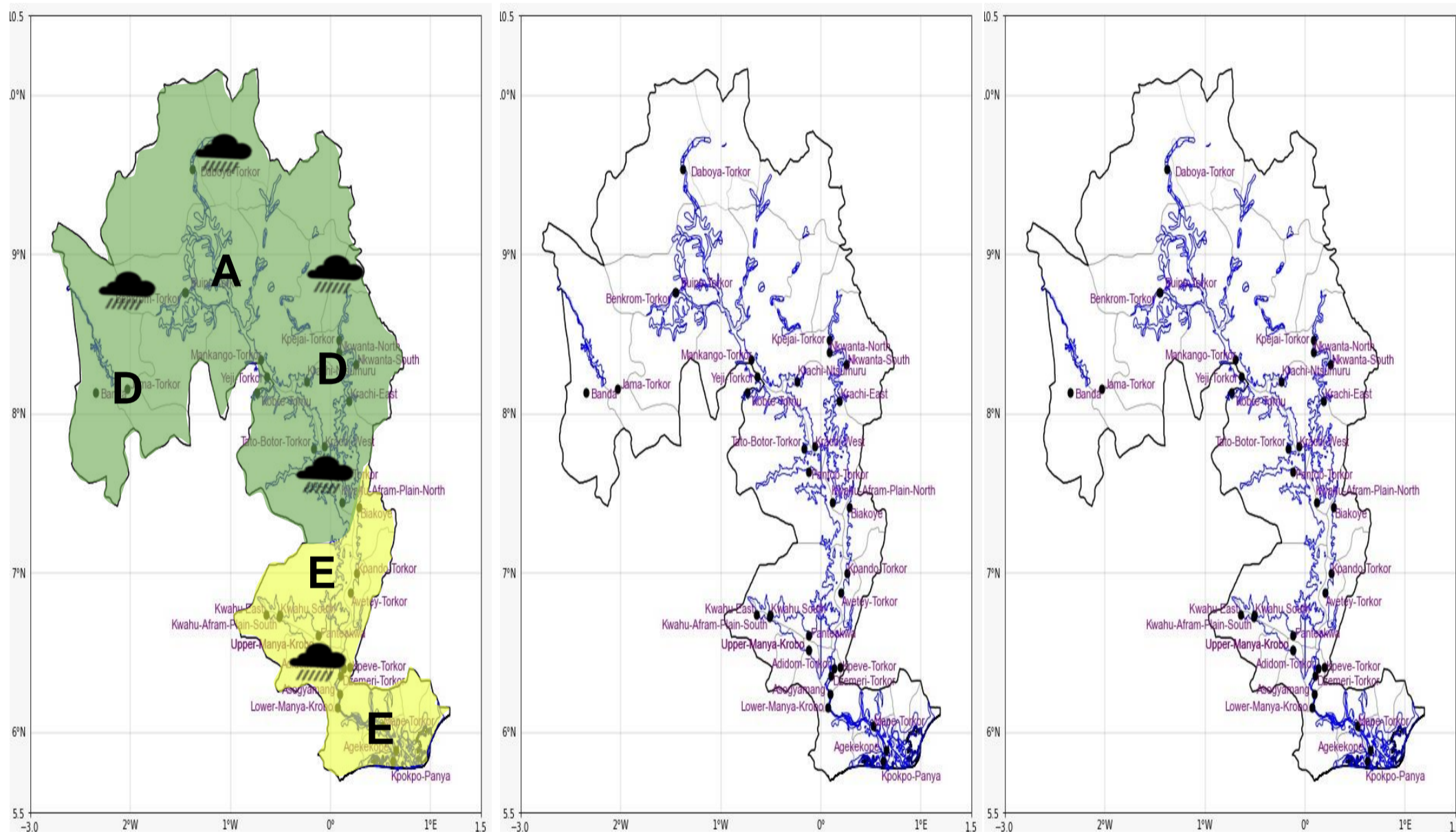


## INLAND WATER IMPACT-BASED FORECAST

### WEATHER SUMMARY

The lake and its surrounding areas are expected to experience mostly cloudy weather conditions throughout the forecast period, with occasional afternoon sunshine. However, there is a 40–60% chance of isolated thunderstorms with rainfall of varying intensity and strong winds affecting the lake and nearby communities, especially the southern lake area from this afternoon into the evening.

AFTERNOON (14/03/2026)	EVENING (14/03/2026)	MORNING (15/03/2026)
------------------------	----------------------	----------------------



Date
14/03/2026
Time Issued
10:00 AM
Valid From
12:00 PM
Nowcasting Risk
Take Action
Be aware
Low risk
No risk

Likelihood ↑	Weather Forecast Risk Table			
	High (>60%)	G	H	I
	Medium (40%-60%)	D	E	F
Low (<40%)	A	B	C	
	Low	Medium	High	
	Impact →			

Time	Surface Wind	Visibility	Temperature
12 hours	W/SW 05 Max 25 kt	(4 – 8) km	(23 – 37) °C
24 hours	S/SW 05 Max 20 kt	(5 – 10) km	(23 – 35) °C