

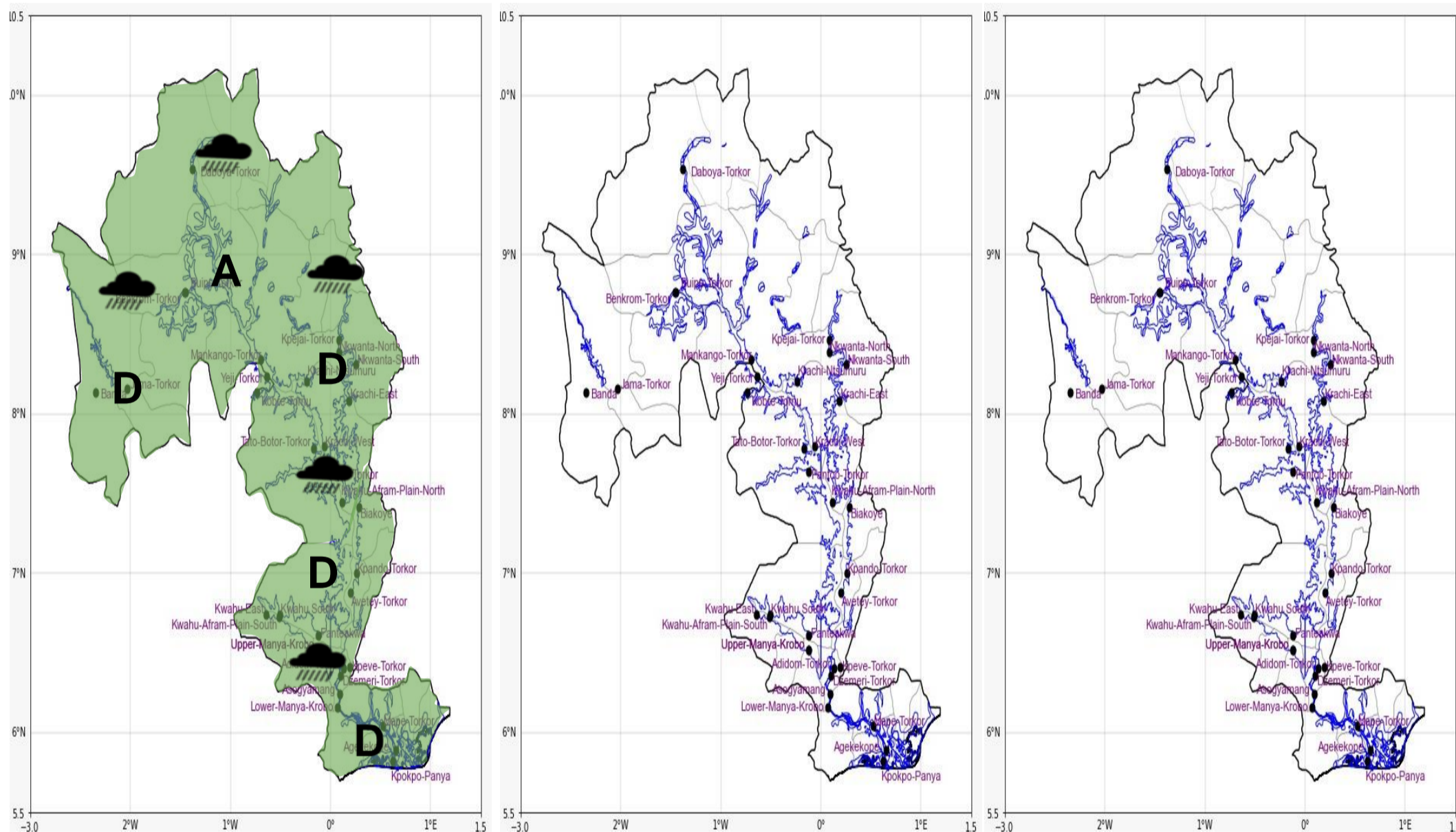


## INLAND WATER IMPACT-BASED FORECAST

### WEATHER SUMMARY

The lake and its surrounding areas are expected to experience variable cloud cover throughout the forecast period, with occasional afternoon sunshine. Cases of isolated light to moderate rains of varying intensity and strong winds are expected to affect the lake and nearby communities, especially the southern lake area, from the afternoon into the evening.

AFTERNOON (15/03/2026)	EVENING (15/03/2026)	MORNING (16/03/2026)
------------------------	----------------------	----------------------



Date
15/03/2026
Time Issued
10:00 AM
Valid From
12:00 PM
Nowcasting Risk
<b>Take Action</b>
<b>Be aware</b>
<b>Low risk</b>
<b>No risk</b>

Likelihood ↑	Weather Forecast Risk Table			
	High (>60%)	<b>G</b>	<b>H</b>	<b>I</b>
	Medium (40%-60%)	<b>D</b>	<b>E</b>	<b>F</b>
Low (<40%)	<b>A</b>	<b>B</b>	<b>C</b>	
	<b>Low</b>	<b>Medium</b>	<b>High</b>	
	Impact →			

Time	Surface Wind	Visibility	Temperature
12 hours	S/SW 05 Max 22 kt	(5 – 10) km	(26 – 38) °C
24 hours	S/SW 05 Max 19 kt	(5 – 10) km	(24 – 34) °C