

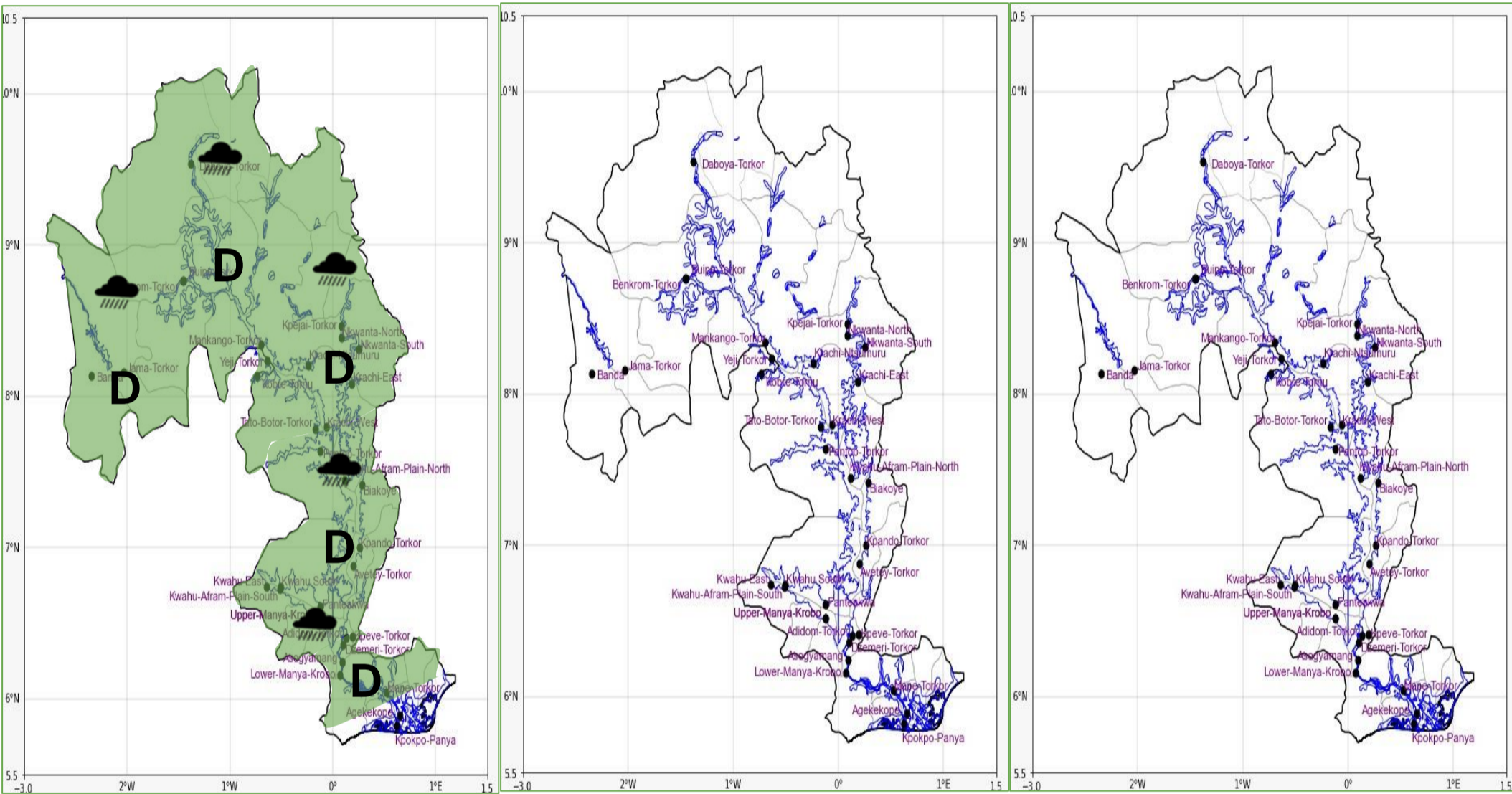


## INLAND WATER IMPACT-BASED FORECAST

### WEATHER SUMMARY

Variable cloud cover is expected over the lake and nearby communities throughout the forecast period. However, isolated thunderstorms with rain of varying intensities are anticipated to develop over the lake and its surrounding areas in the evening, with a 40-60% probability of occurrence.

EVENING (15/03/2026)	MORNING (16/03/2026)	AFTERNOON (16/03/2026)
----------------------	----------------------	------------------------



Date
15/03/2026
Time Issued
4:00 PM
Valid From
06:00 PM
Nowcasting Risk
<b>Take Action</b>
<b>Be aware</b>
<b>Low risk</b>
<b>No risk</b>

Likelihood ↑	Weather Forecast Risk Table			
	High (>60%)	G	H	I
	Medium (40%-60%)	D	E	F
Low (<40%)	A	B	C	
	Low	Medium	High	
	Impact →			

Time	Surface Wind	Visibility	Temperature
12 hours	S/SW 05 Max 20 kt	(4 – 10) km	(22 – 36) °C
24 hours	S/SE 05 Max 20 kt	(5 – 10) km	(22 – 38) °C