

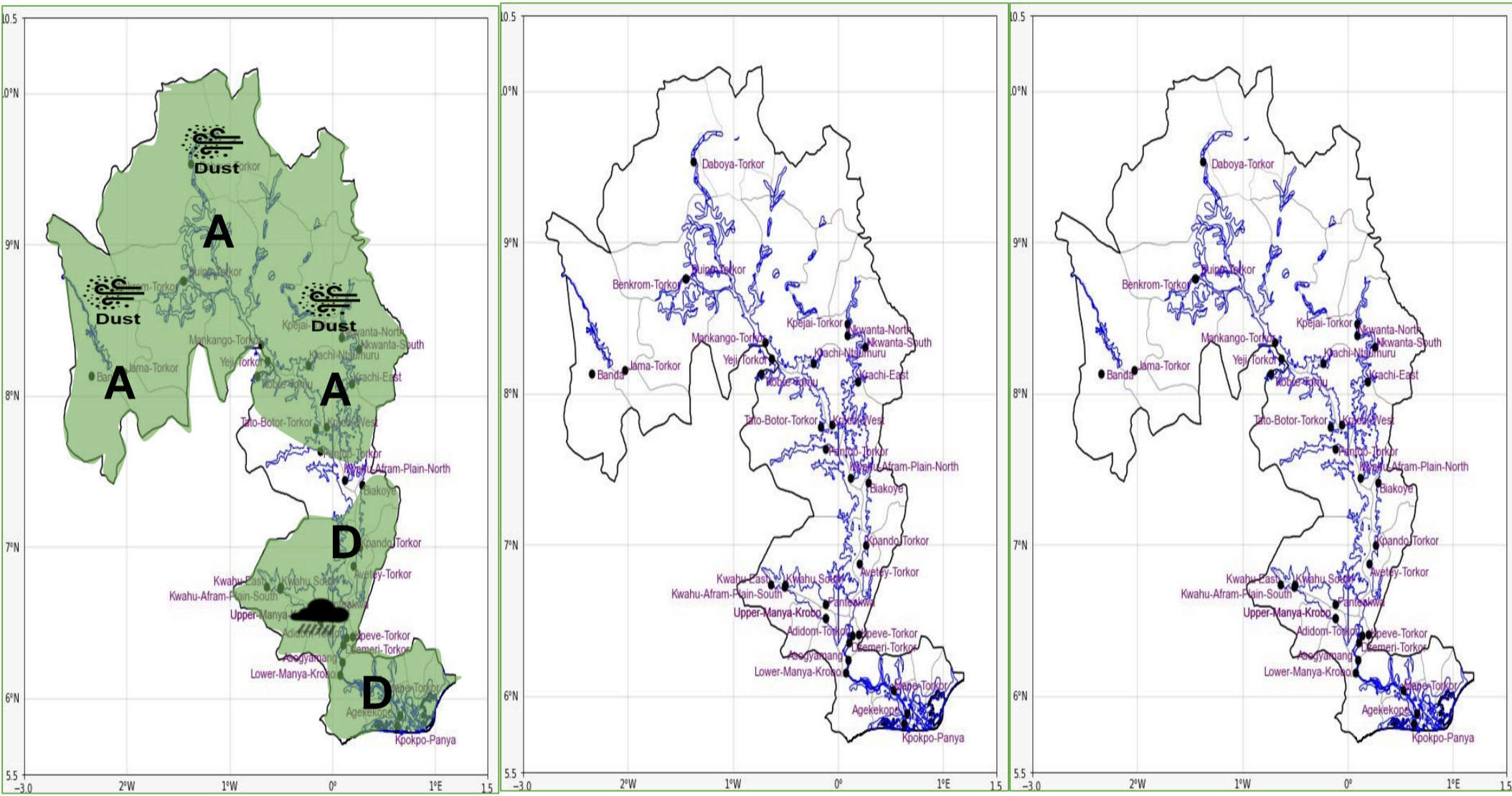


INLAND WATER IMPACT-BASED FORECAST

WEATHER SUMMARY

Variably cloudy weather conditions are anticipated over the lake and nearby communities throughout the forecast period. However, isolated thunderstorms and rain of different intensities are expected over the southern half of the lake in the evening. Meanwhile, slightly hazy conditions are expected to persist over the northern half of the lake during the evening hours. Mist over forest and mountainous areas will reduce visibility during the early morning hours.

EVENING (16/03/2026)	MORNING (17/03/2026)	AFTERNOON (17/03/2026)
----------------------	----------------------	------------------------



Date
16/03/2026
Time Issued
4:00 PM
Valid From
06:00 PM
Nowcasting Risk
Take Action
Be aware
Low risk
No risk

Weather Forecast Risk Table				
Likelihood ↑	High (>60%)	G	H	I
	Medium (40%-60%)	D	E	F
	Low (<40%)	A	B	C
		Low	Medium	High
		Impact →		

Time	Surface Wind	Visibility	Temperature
12 hours	S/SW 05 Max 20 kt	(4 – 10) km	(23 – 34) °C
24 hours	S/SE 05 Max 18 kt	(5 – 10) km	(23 – 36) °C