

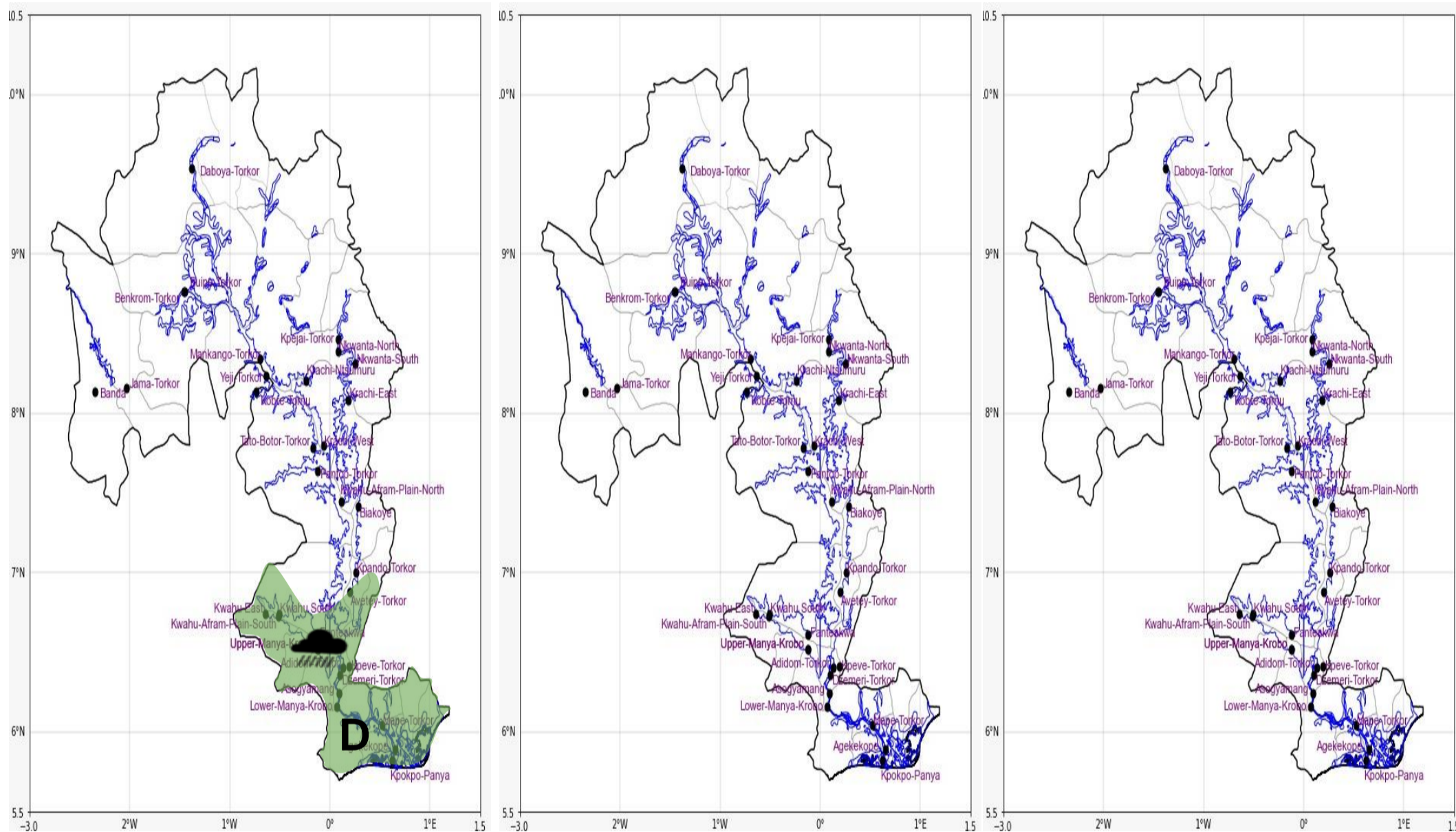


## INLAND WATER IMPACT-BASED FORECAST

### WEATHER SUMMARY

Mostly cloudy skies with periods of sunshine are expected over the southern parts of the lake, with a 40% chance of thunderstorms and rain during the afternoon. The northern and middle areas will, however, remain sunny in the afternoon. As evening approaches, conditions will become variably cloudy across all the lake sectors.

AFTERNOON (17/03/2026)	EVENING (17/03/2026)	MORNING (18/03/2026)
------------------------	----------------------	----------------------



Date
17/03/2026
Time Issued
10:00 AM
Valid From
12:00 PM
Nowcasting Risk
<b>Take Action</b>
<b>Be aware</b>
<b>Low risk</b>
<b>No risk</b>

Likelihood ↑	Weather Forecast Risk Table			
	High (>60%)	G	H	I
	Medium (40%-60%)	D	E	F
	Low (<40%)	A	B	C
		Low	Medium	High
		Impact →		

Time	Surface Wind	Visibility	Temperature
12 hours	SE/SW 05 Max 20 kt	(5 – 10) km	(23 – 40) °C
24 hours	S/SW 05 Max 20 kt	(5 – 10) km	(23 – 38) °C