

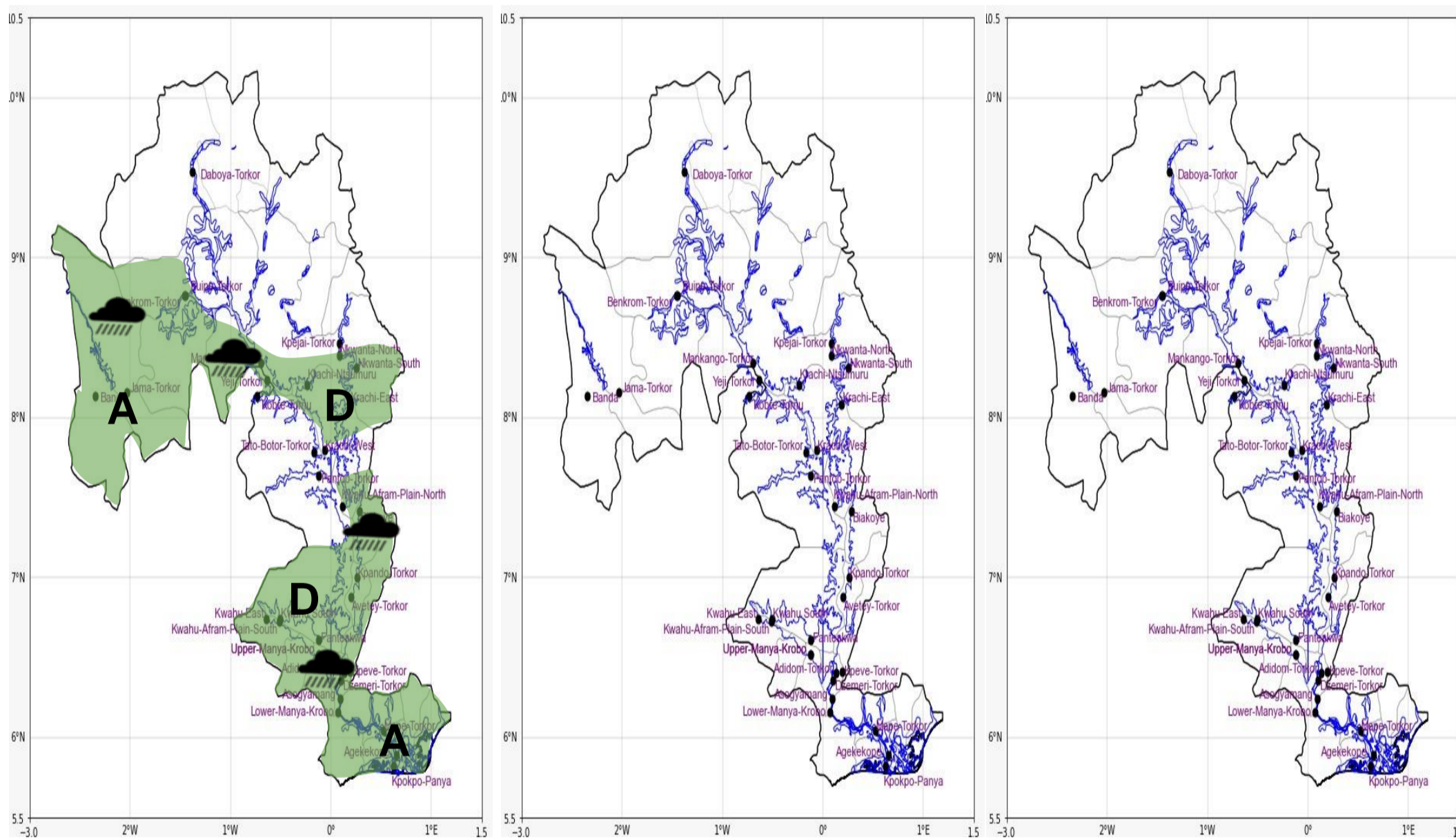


INLAND WATER IMPACT-BASED FORECAST

WEATHER SUMMARY

Sunny intervals are expected over the lake and surrounding areas, with occasional cloud cover in the afternoon. However, cloud build-up later in the afternoon is expected to produce isolated rain of varying intensities and thunderstorms over the lake and nearby communities from late afternoon into the evening.

AFTERNOON (21/03/2026)	EVENING (21/03/2026)	MORNING (22/03/2026)
------------------------	----------------------	----------------------



Date	21/03/2026
Time Issued	10:00 AM
Valid From	12:00 PM
Nowcasting Risk	Low risk
Take Action	Be aware
No risk	No risk

Likelihood ↑	Weather Forecast Risk Table			
	High (>60%)	G	H	I
	Medium (40%-60%)	D	E	F
Low (<40%)	A	B	C	
	Low	Medium	High	
	Impact →			

Time	Surface Wind	Visibility	Temperature
12 hours	S/SE 05 Max 22 kt	(5 – 10) km	(24 – 39) °C
24 hours	S/SW 05 Max 22 kt	(5 – 10) km	(23 – 36) °C