

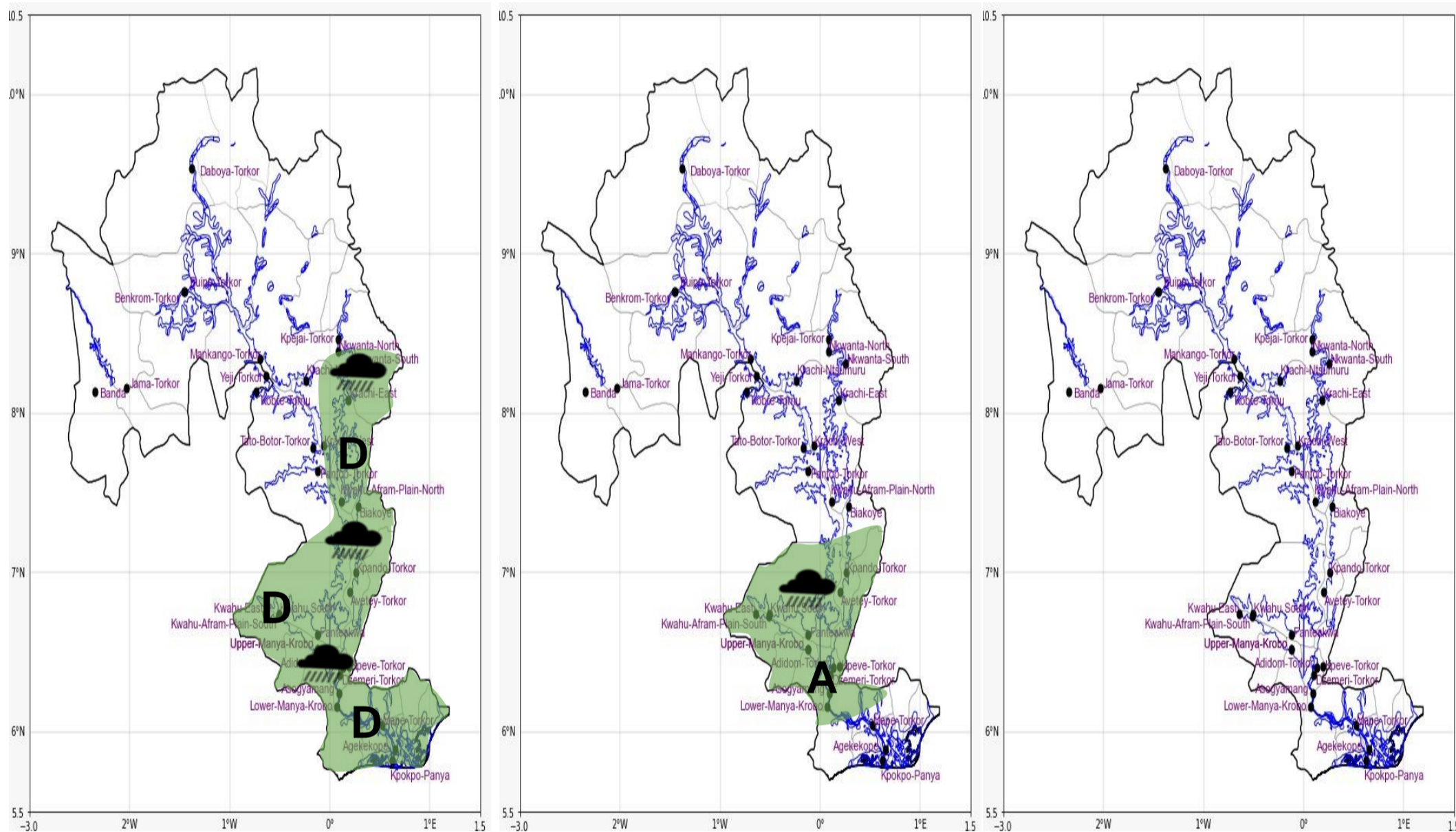


## INLAND WATER IMPACT-BASED FORECAST

### WEATHER SUMMARY

Variably cloudy conditions are anticipated over the lake and nearby communities throughout the forecast period, with occasional sunshine in the afternoon. Later in the day, cloud development is expected to produce isolated light to moderate rain and thunderstorms, along with strong winds, across parts of the middle and southern portions from late afternoon into the evening.

AFTERNOON (22/03/2026)	EVENING (22/03/2026)	MORNING (23/03/2026)
------------------------	----------------------	----------------------



Date
22/03/2026
Time Issued
10:00 AM
Valid From
12:00 PM
Nowcasting Risk
Take Action
Be aware
Low risk
No risk

Likelihood ↑	Weather Forecast Risk Table			
	High (>60%)	G	H	I
	Medium (40%-60%)	D	E	F
Low (<40%)	A	B	C	
	Low	Medium	High	
	Impact →			

Time	Surface Wind	Visibility	Temperature
12 hours	S/SE 05 Max 25 kt	(4 – 10) km	(23 – 36) °C
24 hours	S/SW 05 Max 22 kt	(5 – 10) km	(24 – 34) °C