

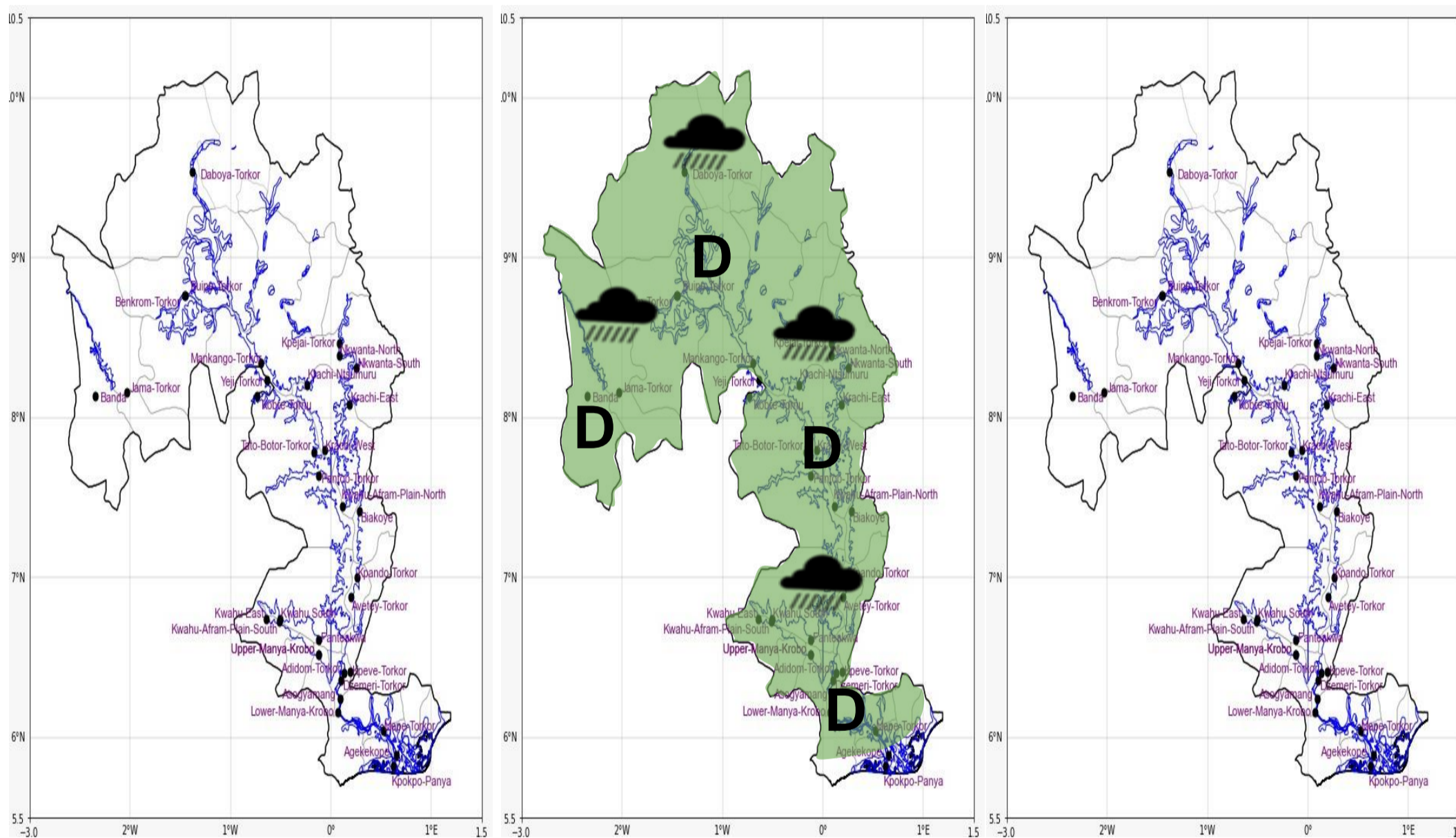


INLAND WATER IMPACT-BASED FORECAST

WEATHER SUMMARY

Sunny spells are anticipated over the lake and its environs throughout the afternoon. However, between late afternoon and evening, there is a 40% chance of isolated light to moderate rain and thunderstorms over most parts of the lake and its surroundings.

AFTERNOON (24/03/2026)	EVENING (24/03/2026)	MORNING (25/03/2026)
------------------------	----------------------	----------------------



Date
24/03/2026
Time Issued
10:00 AM
Valid From
12:00 PM
Nowcasting Risk
Take Action
Be aware
Low risk
No risk

Likelihood ↑	Weather Forecast Risk Table			
	High (>60%)	G	H	I
	Medium (40%-60%)	D	E	F
Low (<40%)	A	B	C	
	Low	Medium	High	
	Impact →			

Time	Surface Wind	Visibility	Temperature
12 hours	S/SW 05 Max 21 kt	(5 – 10) km	(23 – 36) °C
24 hours	S/SW 05 Max 20 kt	(5 – 10) km	(24 – 34) °C