

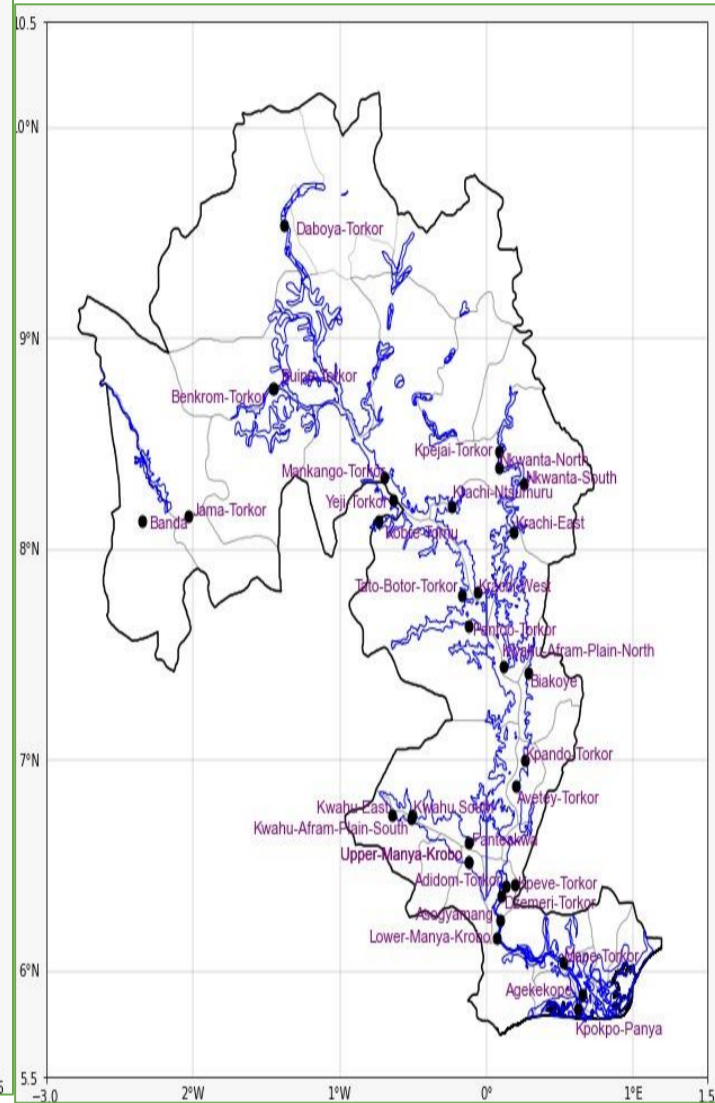
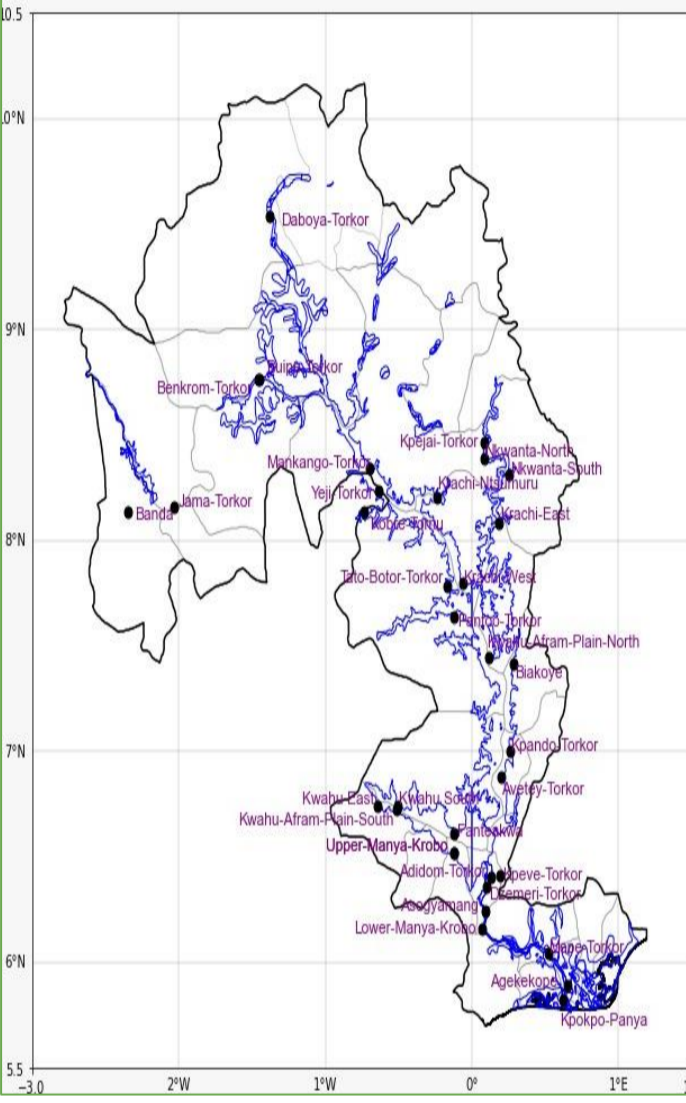
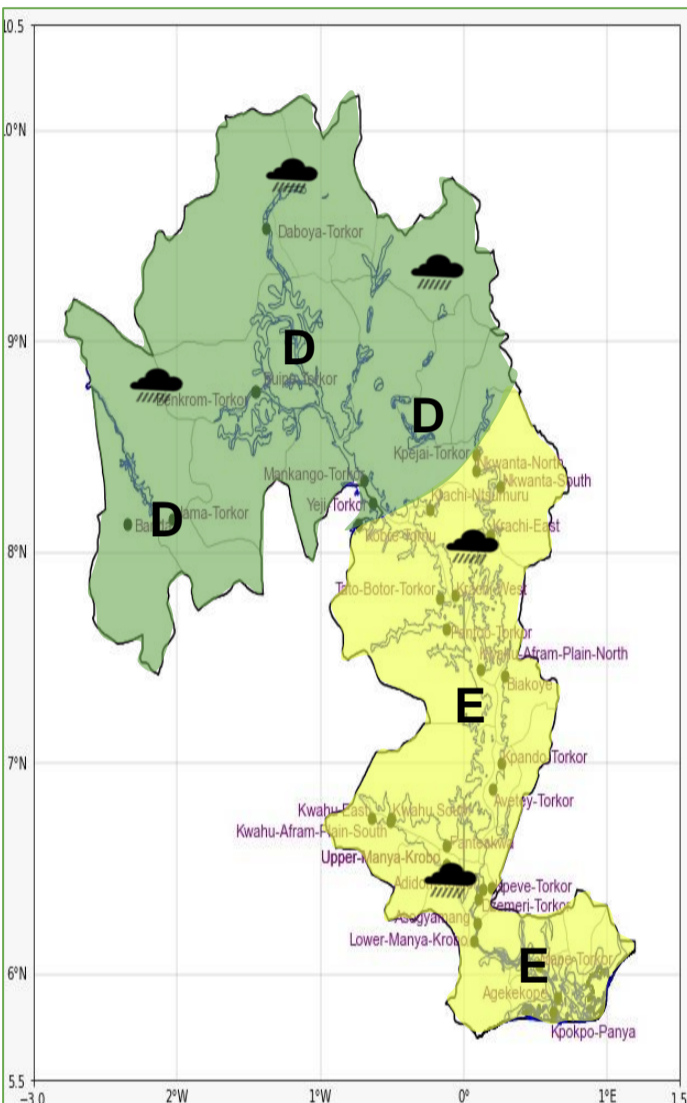


INLAND WATER IMPACT-BASED FORECAST

WEATHER SUMMARY

Generally cloudy weather conditions are anticipated over the lake and nearby communities throughout the forecast period. However, isolated thunderstorms and rain of different intensities with a 40-60% chance of occurrence are expected across the entire lake and its surrounding areas from this evening through to the early morning hours.

EVENING (01/04/2026)	MORNING (02/04/2026)	AFTERNOON (02/04/2026)
----------------------	----------------------	------------------------



Weather Icons

Rain

Wind

Dust

Hail

Date
01/04/2026
Time Issued
4:00 PM
Valid From
06:00 PM
Nowcasting Risk
Take Action
Be aware
Low risk
No risk

Weather Forecast Risk Table				
Likelihood ↑	High (>60%)	G	H	I
	Medium (40%-60%)	D	E	F
	Low (<40%)	A	B	C
		Low	Medium	High
		Impact →		

Time	Surface Wind	Visibility	Temperature
12 hours	S/SW 05 Max 18 kt	(4 – 10) km	(22 – 31) °C
24 hours	S/SE 05 Max 20 kt	(4– 10) km	(22 – 35) °C